

Global Cost Review

Q2 2021

Results as of 07/22/2021



Table of Contents

Region	Focus	Page
Global	Average Regional Commission by Market Cap	3
United States	Quarter over Quarter Metrics Current Quarter	4-8 9-10
United Kingdom	Quarter over Quarter Metrics Current Quarter	11 12
Japan	Quarter over Quarter Metrics Current Quarter	13 14
Canada	Quarter over Quarter Metrics Current Quarter	15 16-17
Asia Pacific ex Japan	Quarter over Quarter Metrics Current Quarter	18 19
Europe ex UK	Quarter over Quarter Metrics Current Quarter	20 21
Emerging Markets	Quarter over Quarter Metrics Current Quarter	22 23
Emerging Asia	Quarter over Quarter Metrics Current Quarter	24 25
Emerging Europe	Quarter over Quarter Metrics Current Quarter	26 27
Latin America	Quarter over Quarter Metrics Current Quarter	28 29
Middle East and Africa	Quarter over Quarter Metrics Current Quarter	30 31
Appendix	Metric and Region Definitions	32

Average Regional Commission by Market Capitalization

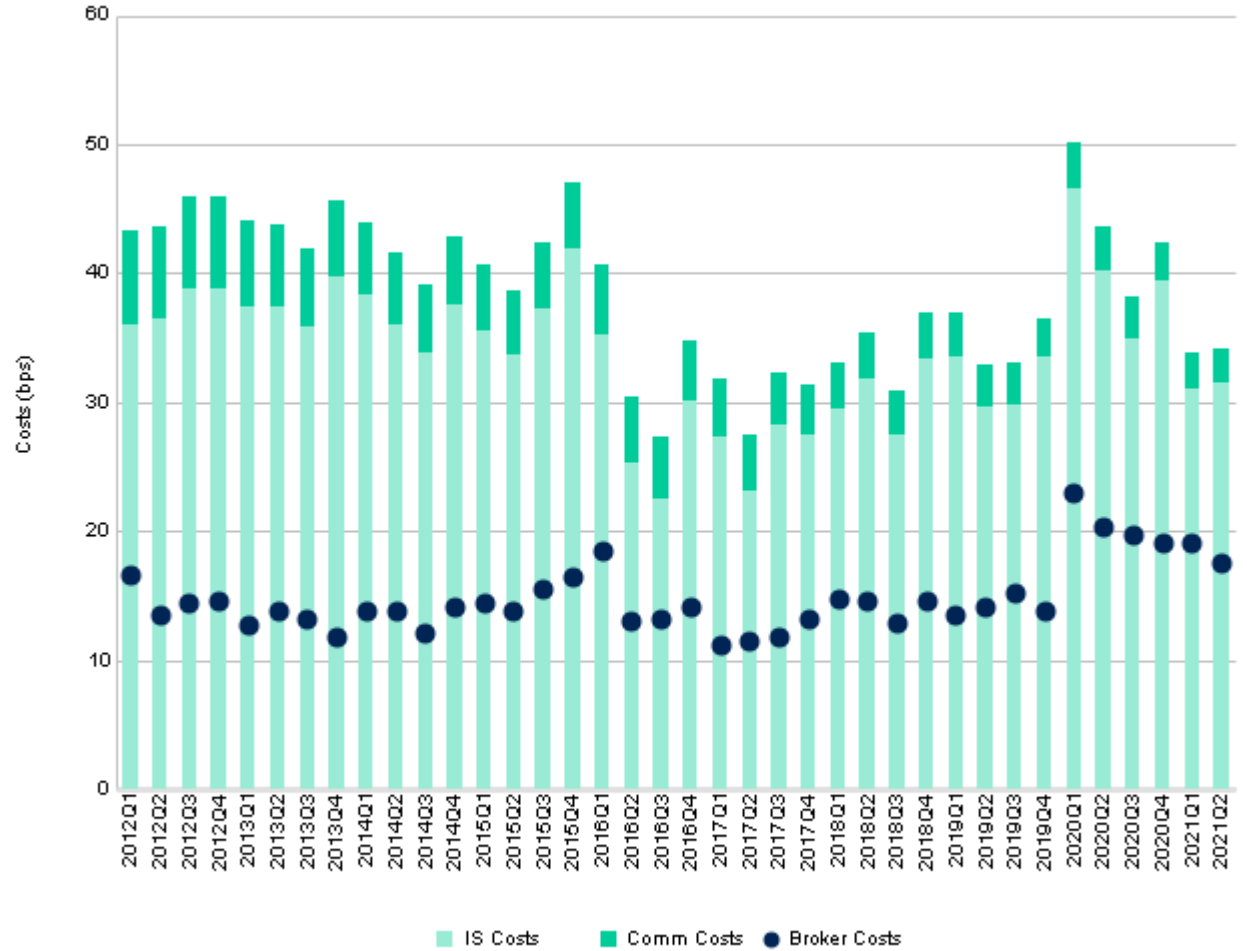
Region		Avg. Commission (BPS)				
		2021Q2	2021Q1	2020Q4	2020Q3	3Q20-2Q21
United States	Micro Cap	8.8	11.0	17.9	13.0	12.3
	Small Cap	9.5	12.2	11.2	9.8	10.9
	Mid Cap	4.8	5.0	5.0	5.3	5.1
	Large Cap	2.3	2.4	2.5	2.7	2.5
	Total	2.8	2.9	3.0	3.2	3.0
United Kingdom	Micro Cap	7.7	6.6	7.2	6.5	6.9
	Small Cap	6.6	6.8	6.4	7.2	6.7
	Mid Cap	4.9	5.2	5.3	5.2	5.2
	Large Cap	4.4	4.4	4.2	4.4	4.3
	Total	4.5	4.5	4.4	4.6	4.5
Japan	Micro Cap	3.0	3.6	3.6	3.7	3.5
	Small Cap	3.4	3.6	3.5	3.4	3.5
	Mid Cap	3.8	4.2	4.0	4.0	4.0
	Large Cap	4.1	4.1	4.1	4.2	4.1
	Total	4.0	4.1	4.1	4.1	4.1
Canada	Micro Cap	10.7	7.3	12.7	13.2	10.8
	Small Cap	12.6	14.0	15.5	16.2	14.5
	Mid Cap	9.0	9.0	9.5	8.8	9.1
	Large Cap	4.4	5.0	4.7	4.8	4.8
	Total	5.7	6.3	6.4	6.4	6.2
Europe ex UK	Micro Cap	6.7	6.2	5.5	5.7	6.1
	Small Cap	5.3	5.2	5.1	5.2	5.3
	Mid Cap	4.7	4.8	4.6	4.6	4.7
	Large Cap	4.4	4.2	4.1	4.4	4.3
	Total	4.4	4.3	4.2	4.4	4.3
Asia Pacific ex Japan	Micro Cap	7.0	5.6	7.2	6.3	6.5
	Small Cap	5.5	5.6	7.3	6.4	6.4
	Mid Cap	6.1	5.9	5.8	6.0	5.9
	Large Cap	5.8	5.8	5.6	5.4	5.6
	Total	5.8	5.8	5.6	5.5	5.7
Emerging Markets	Micro Cap	8.9	8.4	9.8	9.3	9.1
	Small Cap	7.2	6.8	7.5	7.5	7.3
	Mid Cap	7.4	7.3	7.5	7.3	7.4
	Large Cap	7.3	7.5	7.3	7.4	7.4
	Total	7.3	7.5	7.4	7.4	7.4

Region		Avg. Commission (BPS)				
		2021Q2	2021Q1	2020Q4	2020Q3	3Q20-2Q21
Emerging Asia	Micro Cap	8.2	8.0	9.9	9.2	8.9
	Small Cap	6.7	6.6	7.3	7.3	7.1
	Mid Cap	7.0	6.9	6.9	6.8	6.9
	Large Cap	6.9	7.3	6.9	7.0	7.1
	Total	6.9	7.2	6.9	7.0	7.0
Emerging Europe	Micro Cap	9.6	6.9	6.6	6.5	7.2
	Small Cap	6.3	5.6	6.3	7.3	6.4
	Mid Cap	7.1	6.9	8.1	8.1	7.6
	Large Cap	7.3	7.7	8.1	6.7	7.5
	Total	7.2	7.4	8.1	7.4	7.6
Latin America	Micro Cap	12.6	7.2	6.2	5.9	7.2
	Small Cap	7.6	6.8	7.9	7.6	7.5
	Mid Cap	7.9	8.3	8.3	8.2	8.2
	Large Cap	8.1	8.6	8.4	8.2	8.3
	Total	8.1	8.5	8.4	8.2	8.3
Middle East and Africa	Micro Cap	17.7	16.6	12.9	12.8	14.3
	Small Cap	11.0	9.9	9.6	9.5	10.0
	Mid Cap	10.1	9.8	10.2	9.4	9.9
	Large Cap	10.0	9.7	10.4	10.8	10.2
	Total	10.0	9.7	10.3	10.4	10.1

Region		Avg. Commission (CPS)				
		2021Q2	2021Q1	2020Q4	2020Q3	3Q20-2Q21
United States	Micro Cap	0.6	0.8	0.7	0.6	0.7
	Small Cap	0.9	1.2	1.0	0.9	1.0
	Mid Cap	1.2	1.3	1.3	1.2	1.3
	Large Cap	1.6	1.7	1.6	1.6	1.6
	Total	1.5	1.5	1.4	1.4	1.5
Canada	Micro Cap	0.8	0.6	0.9	0.6	0.7
	Small Cap	1.0	0.9	1.0	0.9	0.9
	Mid Cap	1.3	1.4	1.3	1.2	1.3
	Large Cap	1.6	1.7	1.5	1.5	1.6
	Total	1.5	1.4	1.3	1.2	1.4

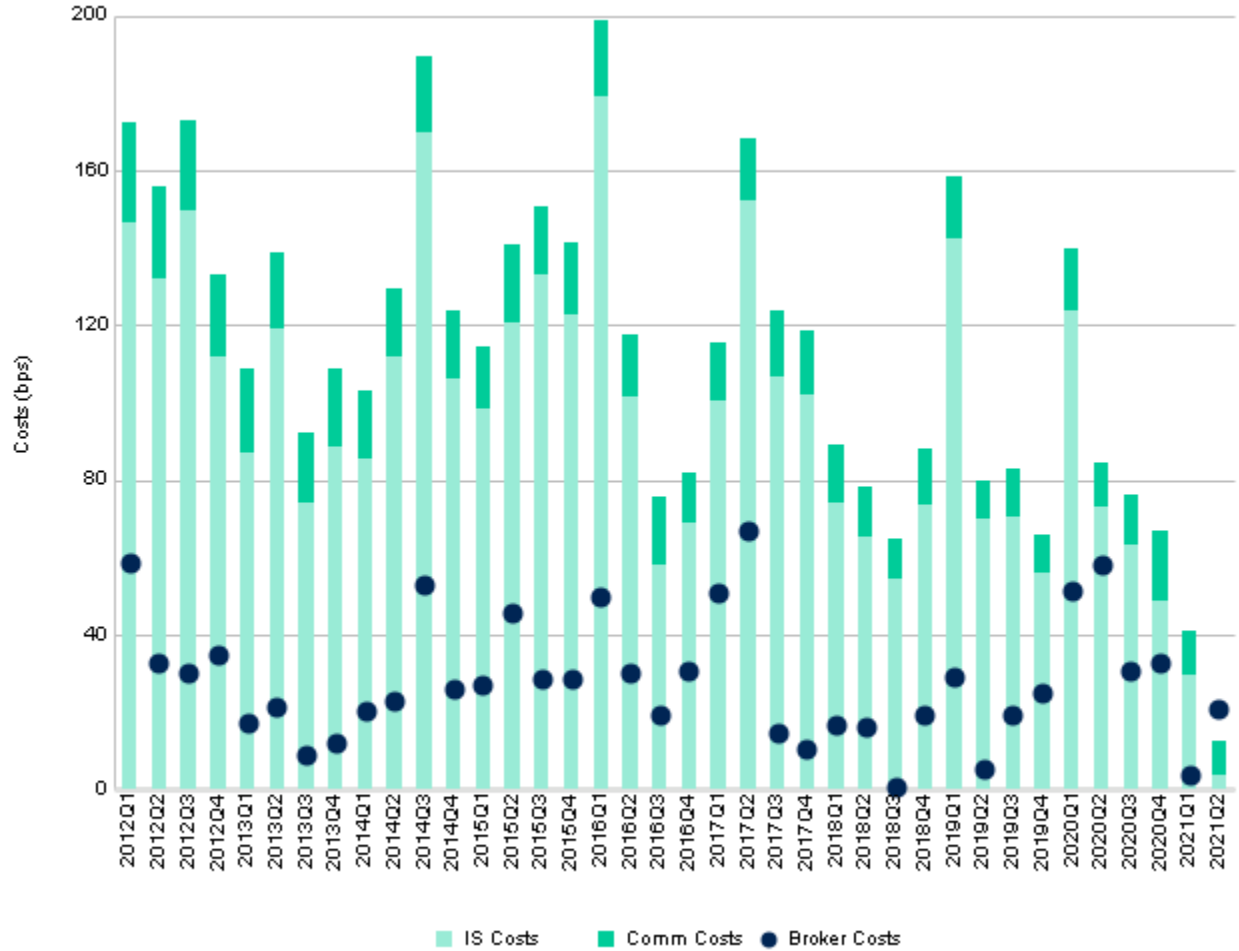
United States (bps)

Quarter	IS Costs	Comm Costs	Total Costs	Broker Costs
2012Q1	36.0	7.3	43.2	16.6
2012Q2	36.5	7.2	43.7	13.6
2012Q3	38.9	7.1	46.1	14.5
2012Q4	38.8	7.2	45.9	14.6
2013Q1	37.5	6.6	44.1	12.7
2013Q2	37.5	6.3	43.7	13.8
2013Q3	35.9	6.1	42.0	13.3
2013Q4	39.8	5.8	45.5	11.9
2014Q1	38.3	5.6	43.9	13.8
2014Q2	36.1	5.6	41.7	13.8
2014Q3	33.8	5.4	39.2	12.1
2014Q4	37.6	5.3	42.9	14.2
2015Q1	35.6	5.0	40.6	14.5
2015Q2	33.7	5.1	38.7	13.8
2015Q3	37.3	5.1	42.4	15.5
2015Q4	42.0	5.1	47.1	16.5
2016Q1	35.3	5.3	40.7	18.6
2016Q2	25.4	5.1	30.5	13.0
2016Q3	22.5	4.8	27.4	13.2
2016Q4	30.1	4.7	34.8	14.1
2017Q1	27.4	4.4	31.9	11.2
2017Q2	23.2	4.4	27.5	11.5
2017Q3	28.3	4.0	32.3	11.9
2017Q4	27.5	4.0	31.4	13.3
2018Q1	29.6	3.5	33.1	14.8
2018Q2	31.9	3.5	35.4	14.7
2018Q3	27.5	3.4	30.9	12.9
2018Q4	33.5	3.5	37.0	14.6
2019Q1	33.5	3.4	36.9	13.6
2019Q2	29.7	3.2	33.0	14.2
2019Q3	29.8	3.2	33.0	15.3
2019Q4	33.5	3.0	36.5	13.8
2020Q1	46.6	3.5	50.1	23.0
2020Q2	40.2	3.4	43.6	20.4
2020Q3	35.0	3.2	38.1	19.7
2020Q4	39.4	3.0	42.4	19.2
2021Q1	31.0	2.9	33.9	19.2
2021Q2	31.5	2.8	34.3	17.6



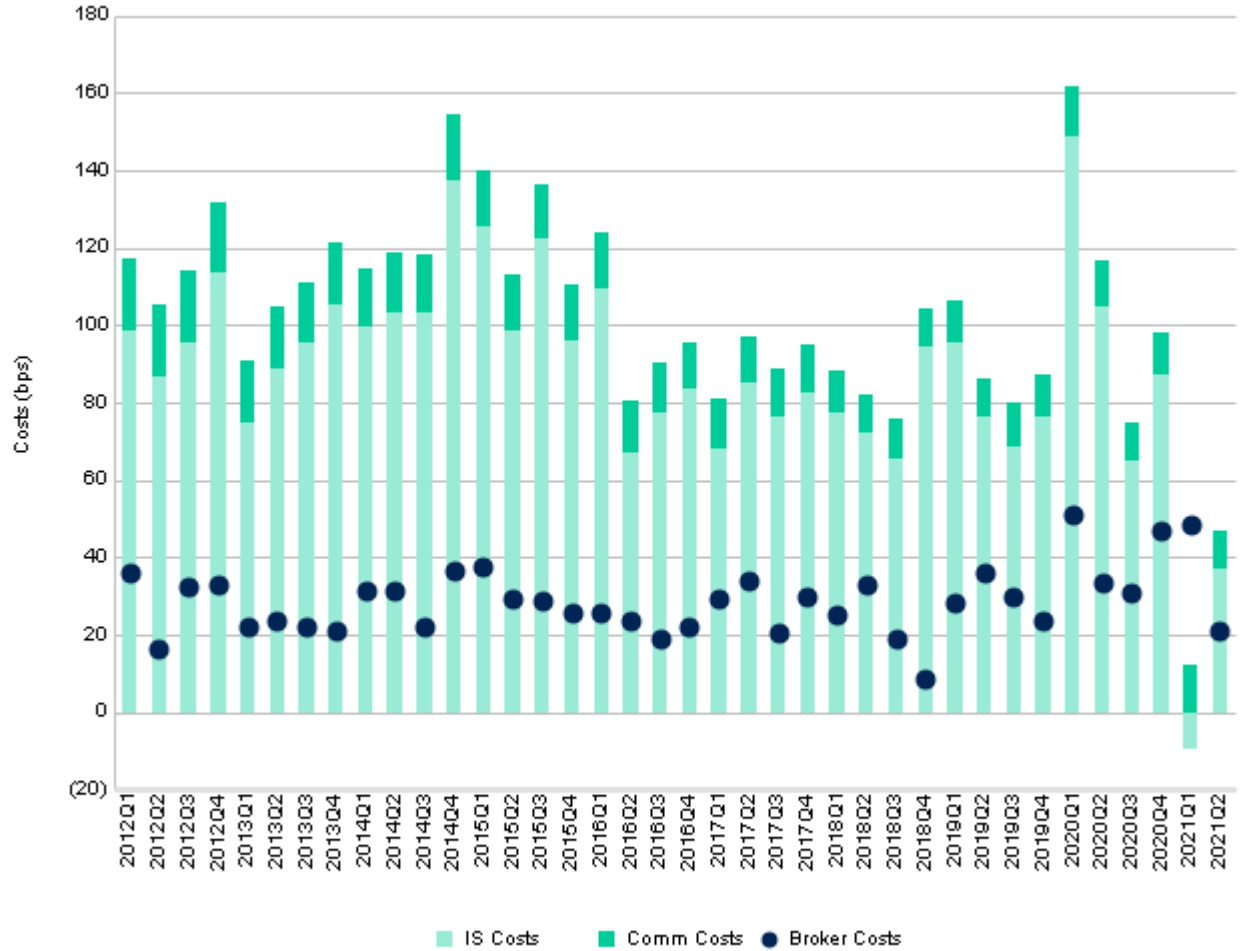
United States - Micro Cap (BPS)

Quarter	IS Costs	Comm Costs	Total Costs	Broker Costs
2012Q1	146.7	25.7	172.4	58.7
2012Q2	132.0	23.7	155.7	32.6
2012Q3	149.6	23.1	172.7	30.0
2012Q4	112.0	20.9	132.9	34.6
2013Q1	86.8	21.9	108.7	17.4
2013Q2	119.0	19.9	138.9	21.4
2013Q3	73.9	18.4	92.3	9.0
2013Q4	88.8	19.7	108.5	12.2
2014Q1	85.3	18.0	103.3	20.2
2014Q2	112.0	17.2	129.2	22.7
2014Q3	169.9	19.8	189.7	53.0
2014Q4	106.0	17.7	123.8	26.3
2015Q1	98.1	16.2	114.3	27.2
2015Q2	120.7	20.3	141.0	45.6
2015Q3	133.2	17.6	150.8	28.8
2015Q4	122.7	18.4	141.1	28.7
2016Q1	179.3	19.3	198.6	49.6
2016Q2	101.3	16.1	117.4	30.3
2016Q3	57.9	17.8	75.7	19.4
2016Q4	68.9	13.0	81.9	30.5
2017Q1	100.4	15.2	115.6	50.8
2017Q2	152.1	16.0	168.0	67.0
2017Q3	106.7	17.2	123.8	14.7
2017Q4	102.3	16.2	118.4	10.3
2018Q1	74.0	15.2	89.2	16.6
2018Q2	65.4	12.7	78.1	16.3
2018Q3	54.3	10.5	64.8	0.7
2018Q4	73.6	14.3	87.9	19.4
2019Q1	142.4	15.9	158.3	29.0
2019Q2	69.9	9.8	79.6	5.4
2019Q3	70.3	12.5	82.9	19.2
2019Q4	55.8	9.8	65.6	24.8
2020Q1	123.8	15.8	139.7	51.2
2020Q2	73.0	11.2	84.2	57.8
2020Q3	63.4	13.0	76.4	30.4
2020Q4	48.9	17.9	66.7	32.6
2021Q1	29.8	11.0	40.8	3.9
2021Q2	3.8	8.8	12.7	20.9



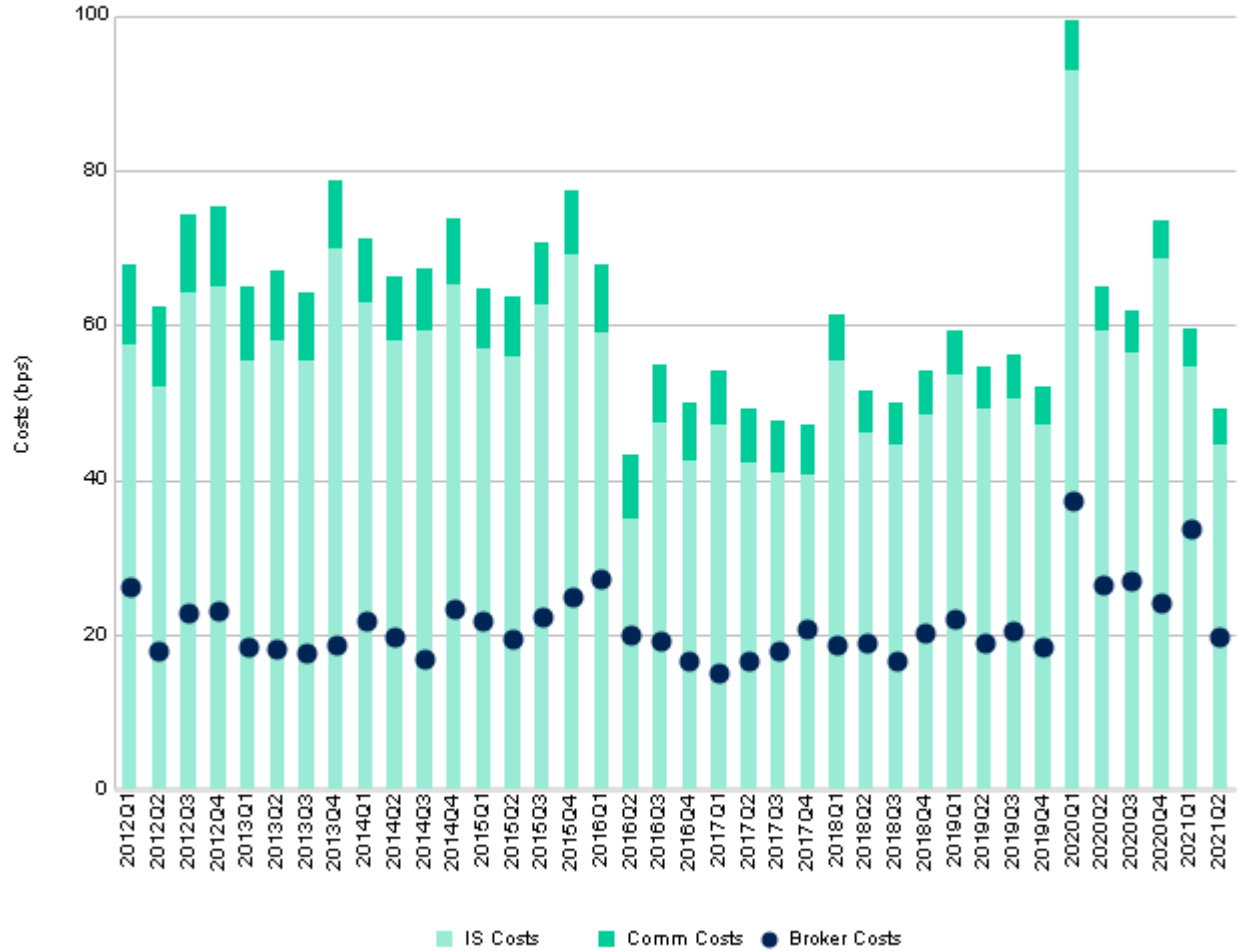
United States - Small Cap (BPS)

Quarter	IS Costs	Comm Costs	Total Costs	Broker Costs
2012Q1	98.5	18.7	117.3	36.2
2012Q2	86.9	18.4	105.3	16.5
2012Q3	95.5	18.8	114.2	32.4
2012Q4	113.7	18.2	131.8	33.0
2013Q1	74.8	16.2	91.0	22.3
2013Q2	88.6	16.4	105.0	23.6
2013Q3	95.5	15.6	111.1	22.2
2013Q4	105.5	16.0	121.5	20.9
2014Q1	99.5	15.0	114.5	31.2
2014Q2	103.1	15.7	118.8	31.4
2014Q3	103.1	15.0	118.1	22.0
2014Q4	137.3	17.0	154.3	36.5
2015Q1	125.3	14.8	140.1	37.8
2015Q2	98.8	14.3	113.1	29.4
2015Q3	122.5	14.1	136.6	28.9
2015Q4	95.8	14.6	110.4	25.8
2016Q1	109.3	14.8	124.2	25.6
2016Q2	66.9	13.5	80.4	23.8
2016Q3	77.1	13.4	90.5	19.1
2016Q4	83.3	12.1	95.4	22.2
2017Q1	67.8	13.0	80.8	29.0
2017Q2	85.2	11.9	97.0	34.2
2017Q3	76.3	12.4	88.7	20.7
2017Q4	82.8	12.0	94.8	29.8
2018Q1	77.3	11.1	88.4	24.9
2018Q2	72.4	9.6	82.0	32.9
2018Q3	65.4	10.2	75.6	19.1
2018Q4	94.2	10.2	104.4	8.7
2019Q1	95.4	11.0	106.3	28.4
2019Q2	76.2	10.0	86.2	36.1
2019Q3	68.5	11.3	79.8	29.9
2019Q4	76.4	10.6	87.0	23.5
2020Q1	148.7	13.2	161.9	51.0
2020Q2	104.9	11.6	116.6	33.3
2020Q3	64.9	9.8	74.7	31.0
2020Q4	87.1	11.2	98.3	46.8
2021Q1	(9.4)	12.2	2.8	48.6
2021Q2	37.2	9.5	46.7	21.0



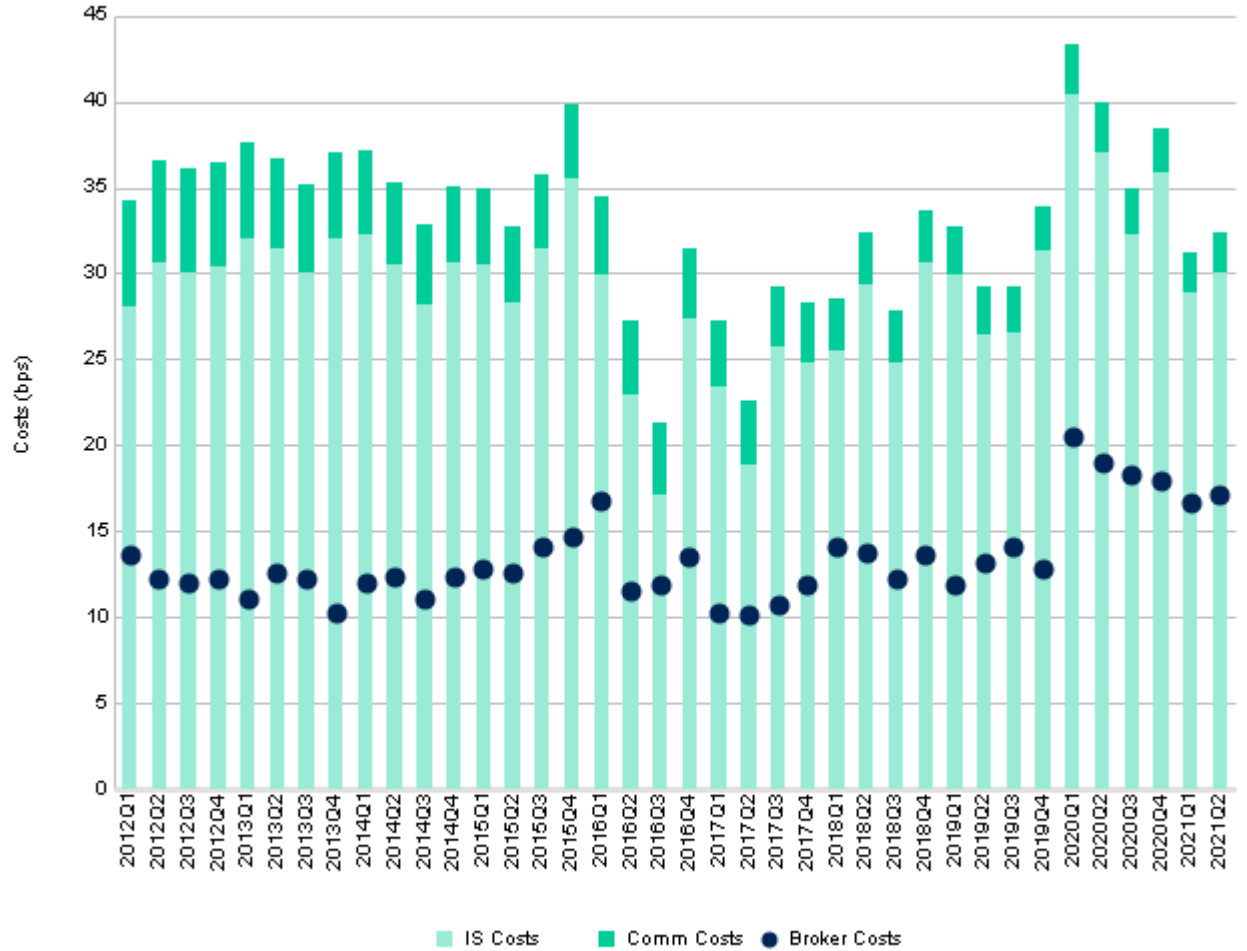
United States - Mid Cap (BPS)

Quarter	IS Costs	Comm Costs	Total Costs	Broker Costs
2012Q1	57.5	10.2	67.7	26.1
2012Q2	52.1	10.2	62.3	17.8
2012Q3	64.2	10.2	74.4	22.8
2012Q4	64.9	10.3	75.2	23.0
2013Q1	55.3	9.7	65.1	18.5
2013Q2	57.9	9.2	67.1	18.1
2013Q3	55.3	9.0	64.3	17.6
2013Q4	70.0	8.7	78.6	18.8
2014Q1	62.8	8.5	71.3	21.9
2014Q2	58.1	8.2	66.3	19.7
2014Q3	59.2	8.1	67.3	17.0
2014Q4	65.3	8.6	73.9	23.3
2015Q1	57.0	7.8	64.7	21.9
2015Q2	56.0	7.6	63.6	19.4
2015Q3	62.6	8.0	70.6	22.4
2015Q4	69.1	8.2	77.3	24.9
2016Q1	59.0	8.9	67.9	27.3
2016Q2	35.0	8.3	43.3	19.9
2016Q3	47.4	7.6	55.0	19.3
2016Q4	42.5	7.4	49.9	16.6
2017Q1	47.1	7.0	54.1	15.2
2017Q2	42.2	7.1	49.3	16.5
2017Q3	41.0	6.7	47.7	18.0
2017Q4	40.7	6.5	47.2	20.9
2018Q1	55.5	5.9	61.4	18.8
2018Q2	46.1	5.5	51.6	19.1
2018Q3	44.6	5.3	49.9	16.6
2018Q4	48.4	5.8	54.2	20.3
2019Q1	53.7	5.6	59.2	22.1
2019Q2	49.2	5.3	54.5	18.9
2019Q3	50.6	5.6	56.2	20.6
2019Q4	47.1	5.1	52.1	18.5
2020Q1	93.0	6.3	99.3	37.4
2020Q2	59.2	5.9	65.0	26.3
2020Q3	56.4	5.3	61.8	26.9
2020Q4	68.5	5.0	73.6	24.2
2021Q1	54.5	5.0	59.5	33.6
2021Q2	44.4	4.8	49.2	19.8



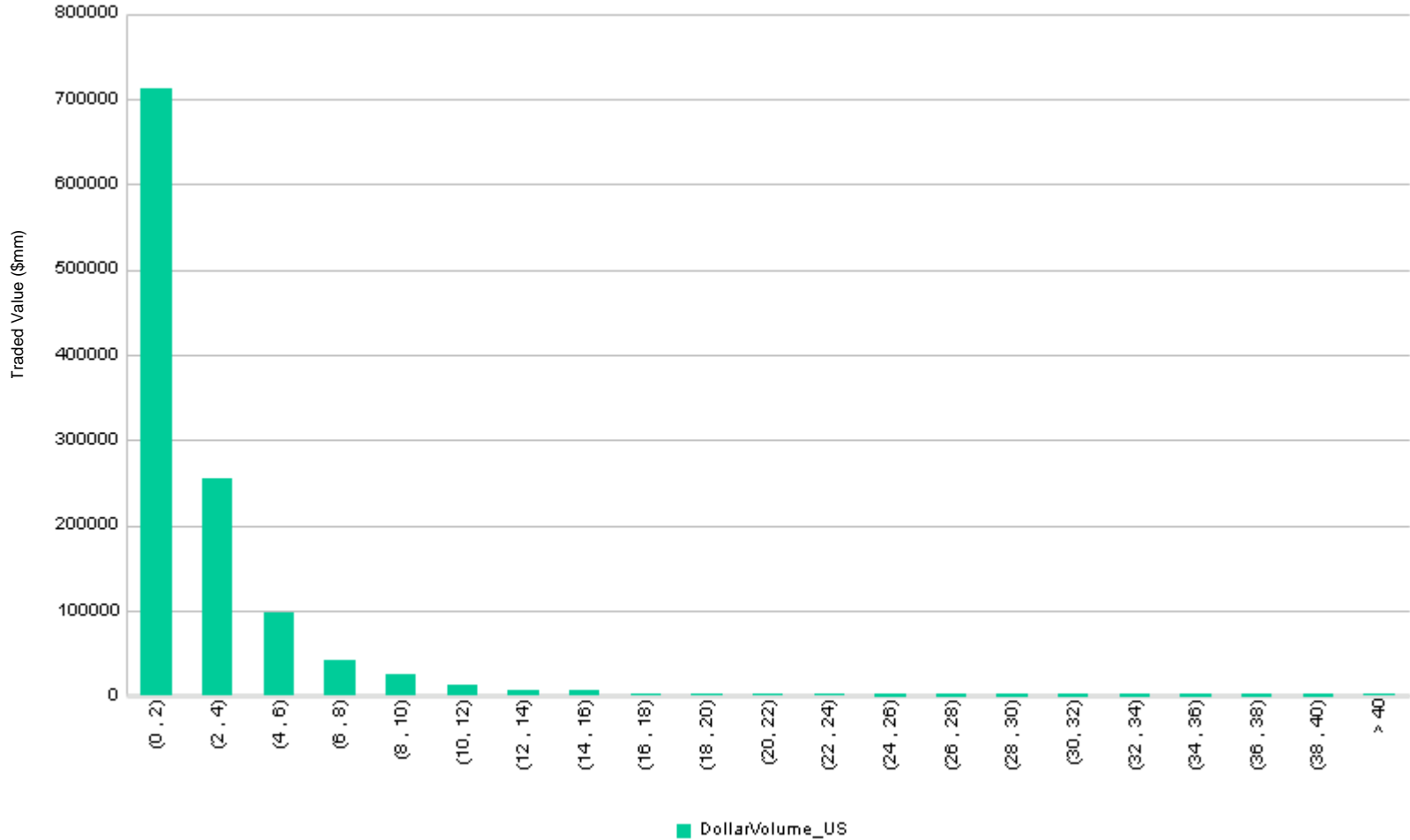
United States - Large Cap (BPS)

Quarter	IS Costs	Comm Costs	Total Costs	Broker Costs
2012Q1	28.1	6.2	34.3	13.6
2012Q2	30.6	6.0	36.6	12.2
2012Q3	30.1	6.0	36.1	12.0
2012Q4	30.4	6.1	36.5	12.3
2013Q1	32.0	5.6	37.6	11.1
2013Q2	31.4	5.3	36.8	12.6
2013Q3	30.0	5.2	35.2	12.2
2013Q4	32.0	5.0	37.0	10.3
2014Q1	32.3	4.9	37.2	12.0
2014Q2	30.5	4.8	35.3	12.4
2014Q3	28.2	4.7	32.9	11.1
2014Q4	30.6	4.5	35.1	12.3
2015Q1	30.5	4.4	34.9	12.9
2015Q2	28.3	4.4	32.8	12.6
2015Q3	31.4	4.4	35.7	14.1
2015Q4	35.5	4.3	39.8	14.7
2016Q1	30.0	4.5	34.5	16.8
2016Q2	22.9	4.4	27.3	11.6
2016Q3	17.2	4.1	21.3	11.9
2016Q4	27.3	4.1	31.4	13.6
2017Q1	23.4	3.9	27.3	10.3
2017Q2	18.9	3.7	22.6	10.2
2017Q3	25.8	3.5	29.3	10.8
2017Q4	24.9	3.5	28.3	11.9
2018Q1	25.5	3.1	28.6	14.1
2018Q2	29.4	3.1	32.4	13.8
2018Q3	24.8	3.0	27.8	12.3
2018Q4	30.6	3.0	33.6	13.6
2019Q1	29.9	2.9	32.8	11.9
2019Q2	26.5	2.7	29.2	13.1
2019Q3	26.5	2.7	29.2	14.2
2019Q4	31.3	2.5	33.9	12.9
2020Q1	40.4	3.0	43.3	20.5
2020Q2	37.1	2.9	39.9	19.0
2020Q3	32.2	2.7	34.9	18.3
2020Q4	35.9	2.5	38.5	18.0
2021Q1	28.9	2.4	31.3	16.7
2021Q2	30.1	2.3	32.4	17.1



United States Commission (bps)

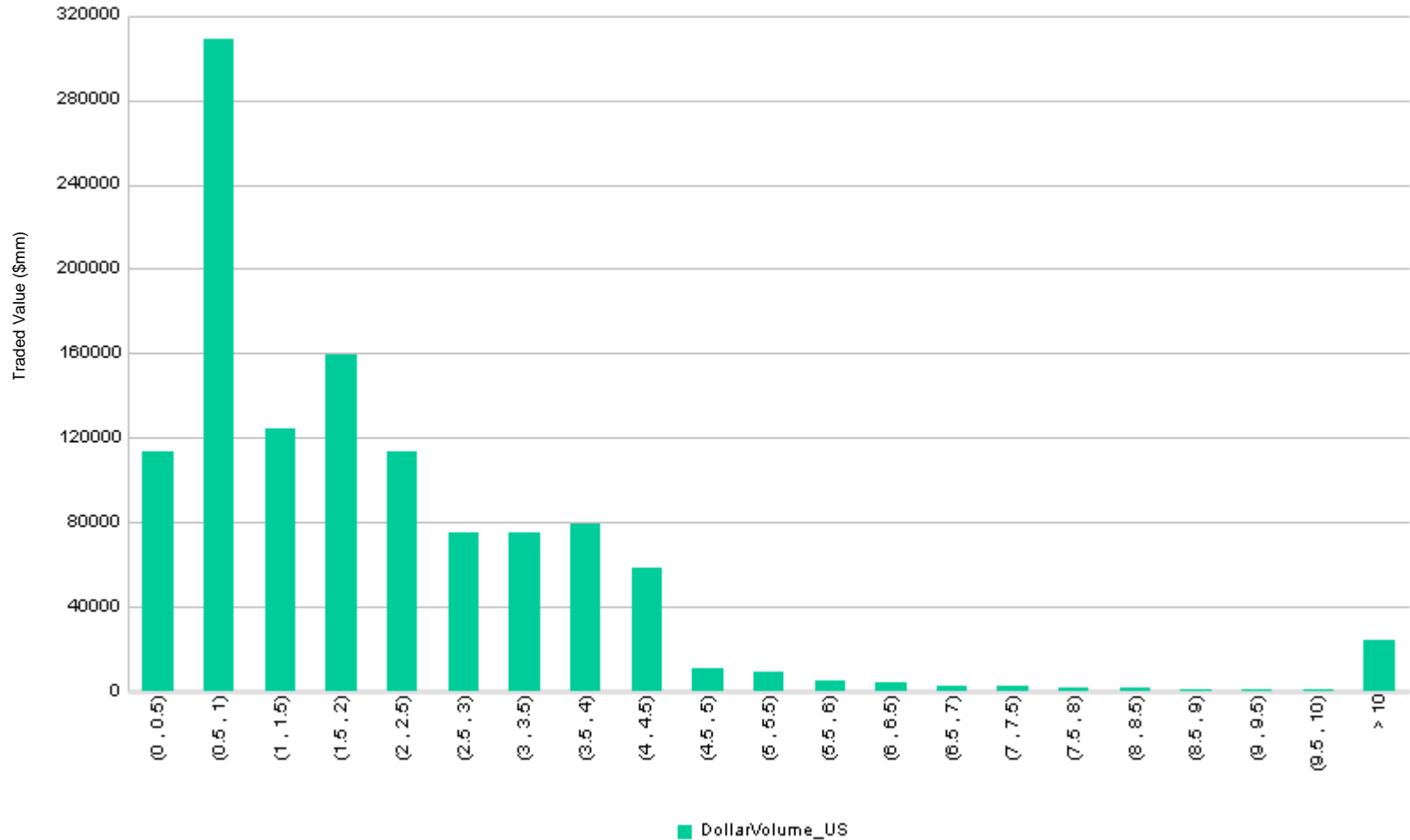
Commission (BPS)	Traded Value (USD Millions)
(0 , 2)	711,734
(2 , 4)	254,674
(4 , 6)	97,386
(6 , 8)	42,236
(8 , 10)	25,910
(10 , 12)	12,016
(12 , 14)	7,592
(14 , 16)	5,878
(16 , 18)	3,463
(18 , 20)	2,989
(20 , 22)	2,438
(22 , 24)	1,884
(24 , 26)	1,277
(26 , 28)	928
(28 , 30)	783
(30 , 32)	619
(32 , 34)	425
(34 , 36)	359
(36 , 38)	332
(38 , 40)	379
> 40	1,449
Total	1,174,749



Market Cap	Avg Commission (BPS)	Traded Value (USD Millions)
Micro Cap	8.8	2,206
Small Cap	9.5	10,804
Mid Cap	4.8	167,848
Large Cap	2.3	993,891
Total	2.8	1,174,749

United States Commission (CPS)

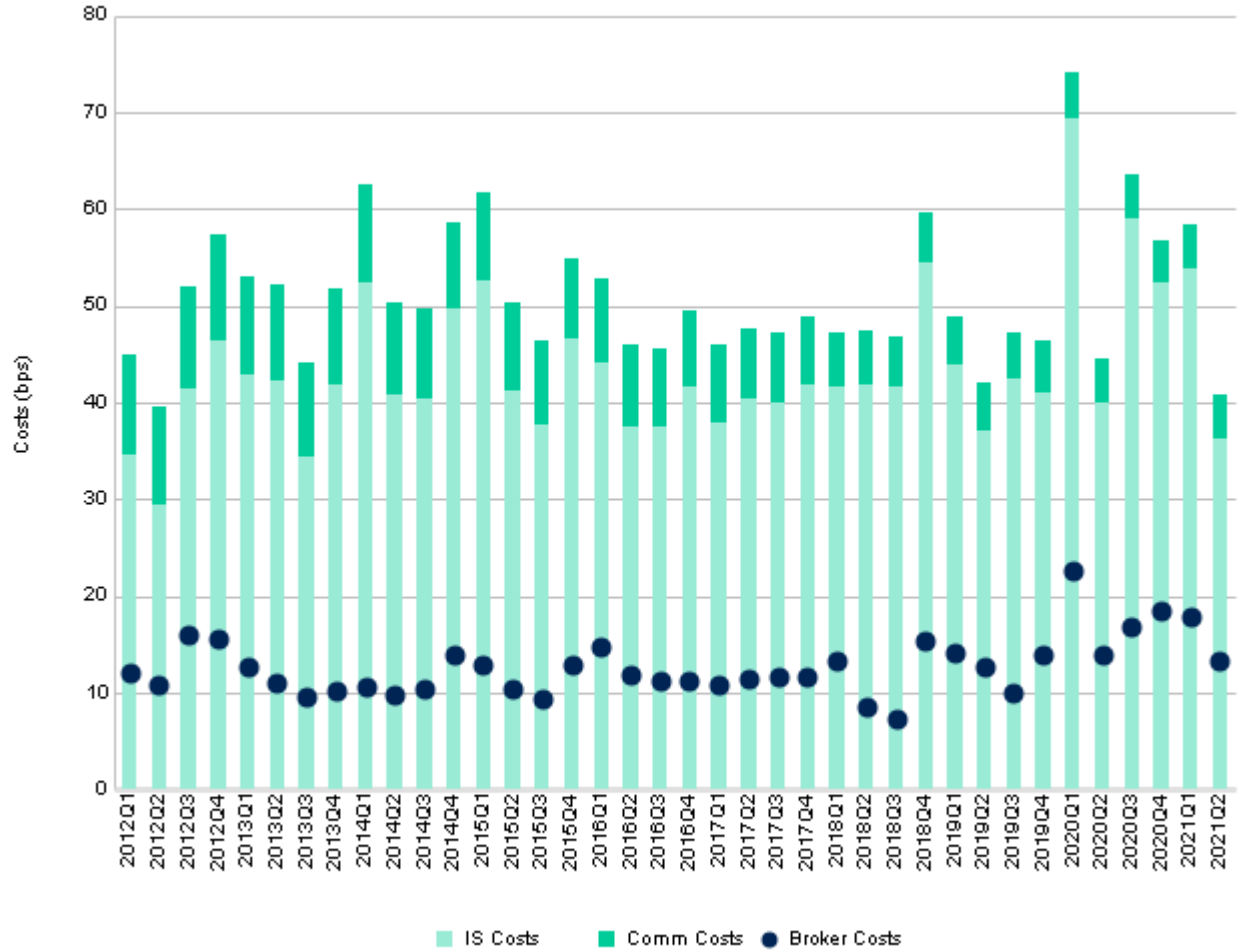
Commission (CPS)	Traded Value (USD Millions)
(0 , 0.5)	113,303
(0.5 , 1)	309,178
(1 , 1.5)	124,141
(1.5 , 2)	159,576
(2 , 2.5)	113,871
(2.5 , 3)	75,001
(3 , 3.5)	75,407
(3.5 , 4)	79,268
(4 , 4.5)	58,750
(4.5 , 5)	10,733
(5 , 5.5)	9,067
(5.5 , 6)	5,551
(6 , 6.5)	4,288
(6.5 , 7)	2,703
(7 , 7.5)	2,460
(7.5 , 8)	2,121
(8 , 8.5)	1,677
(8.5 , 9)	1,239
(9 , 9.5)	1,086
(9.5 , 10)	1,064
> 10	24,265
Total	1,174,749



Market Cap	Avg Commission (CPS)	Traded Value (USD Millions)
Micro Cap	0.6	2,206
Small Cap	0.9	10,804
Mid Cap	1.2	167,848
Large Cap	1.6	993,891
Total	1.5	1,174,749

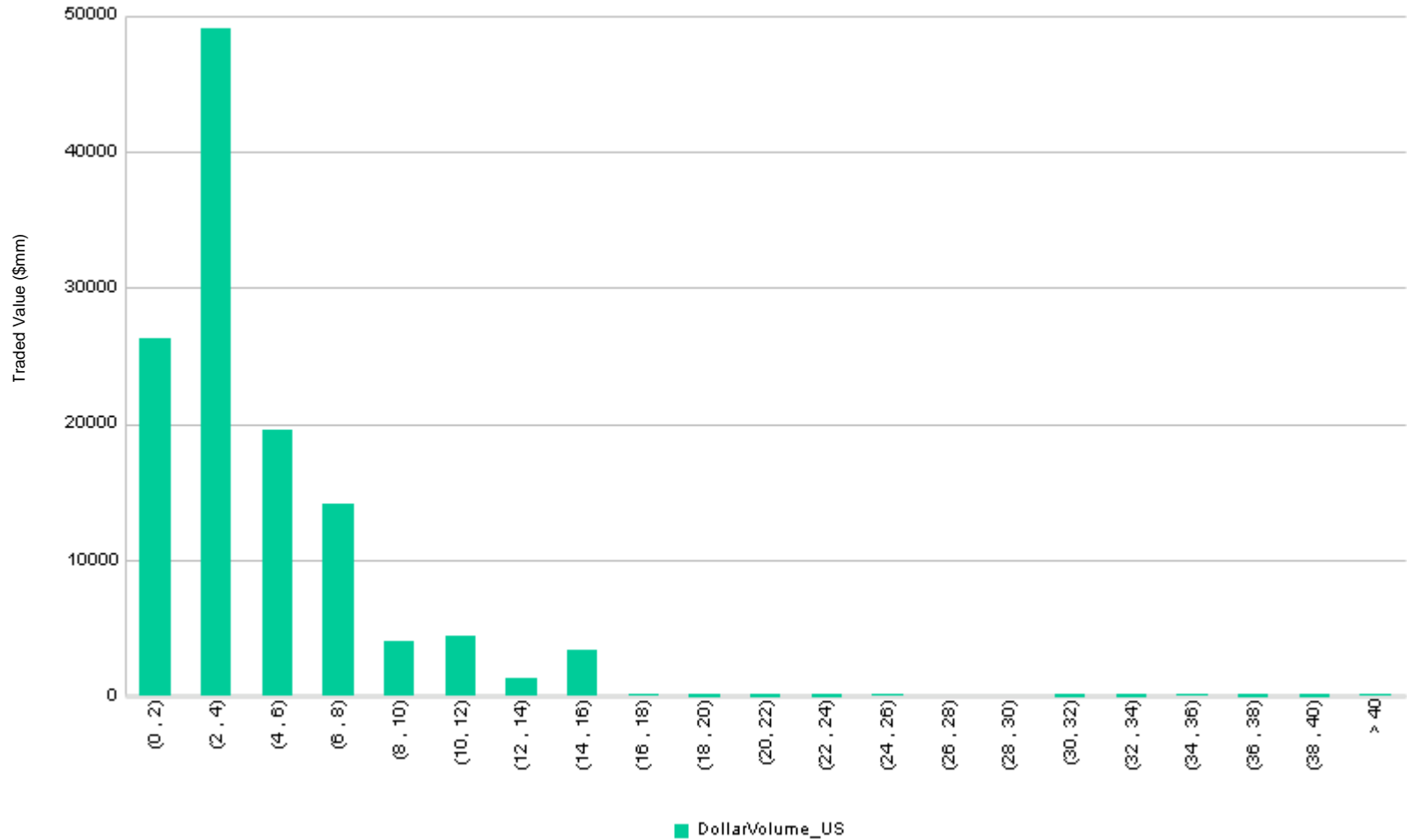
United Kingdom (BPS)

Quarter	IS Costs	Comm Costs	Total Costs	Broker_BPS
2012Q1	34.7	10.3	45.0	12.1
2012Q2	29.4	10.1	39.5	10.9
2012Q3	41.4	10.6	52.0	15.9
2012Q4	46.3	11.1	57.4	15.5
2013Q1	42.8	10.3	53.1	12.7
2013Q2	42.3	9.8	52.1	11.0
2013Q3	34.3	9.8	44.1	9.5
2013Q4	41.8	9.9	51.8	10.2
2014Q1	52.5	10.1	62.6	10.6
2014Q2	40.9	9.5	50.4	9.7
2014Q3	40.3	9.4	49.8	10.4
2014Q4	49.6	8.9	58.5	14.0
2015Q1	52.7	8.9	61.6	12.8
2015Q2	41.2	9.2	50.4	10.4
2015Q3	37.7	8.6	46.3	9.3
2015Q4	46.5	8.3	54.9	13.0
2016Q1	44.1	8.6	52.7	14.8
2016Q2	37.5	8.3	45.9	11.9
2016Q3	37.5	8.0	45.5	11.3
2016Q4	41.7	7.8	49.5	11.2
2017Q1	37.8	8.1	45.9	10.7
2017Q2	40.4	7.2	47.6	11.4
2017Q3	39.9	7.4	47.3	11.7
2017Q4	41.7	7.0	48.8	11.6
2018Q1	41.6	5.8	47.3	13.3
2018Q2	41.8	5.5	47.3	8.5
2018Q3	41.6	5.3	46.9	7.4
2018Q4	54.5	5.1	59.6	15.4
2019Q1	43.9	5.1	49.0	14.1
2019Q2	37.1	4.9	42.0	12.8
2019Q3	42.4	4.8	47.2	10.1
2019Q4	41.1	5.2	46.3	14.0
2020Q1	69.3	4.9	74.2	22.6
2020Q2	40.0	4.6	44.6	14.0
2020Q3	59.0	4.6	63.6	16.7
2020Q4	52.4	4.4	56.8	18.4
2021Q1	53.8	4.5	58.4	17.9
2021Q2	36.2	4.5	40.7	13.3



United Kingdom Commission (BPS)

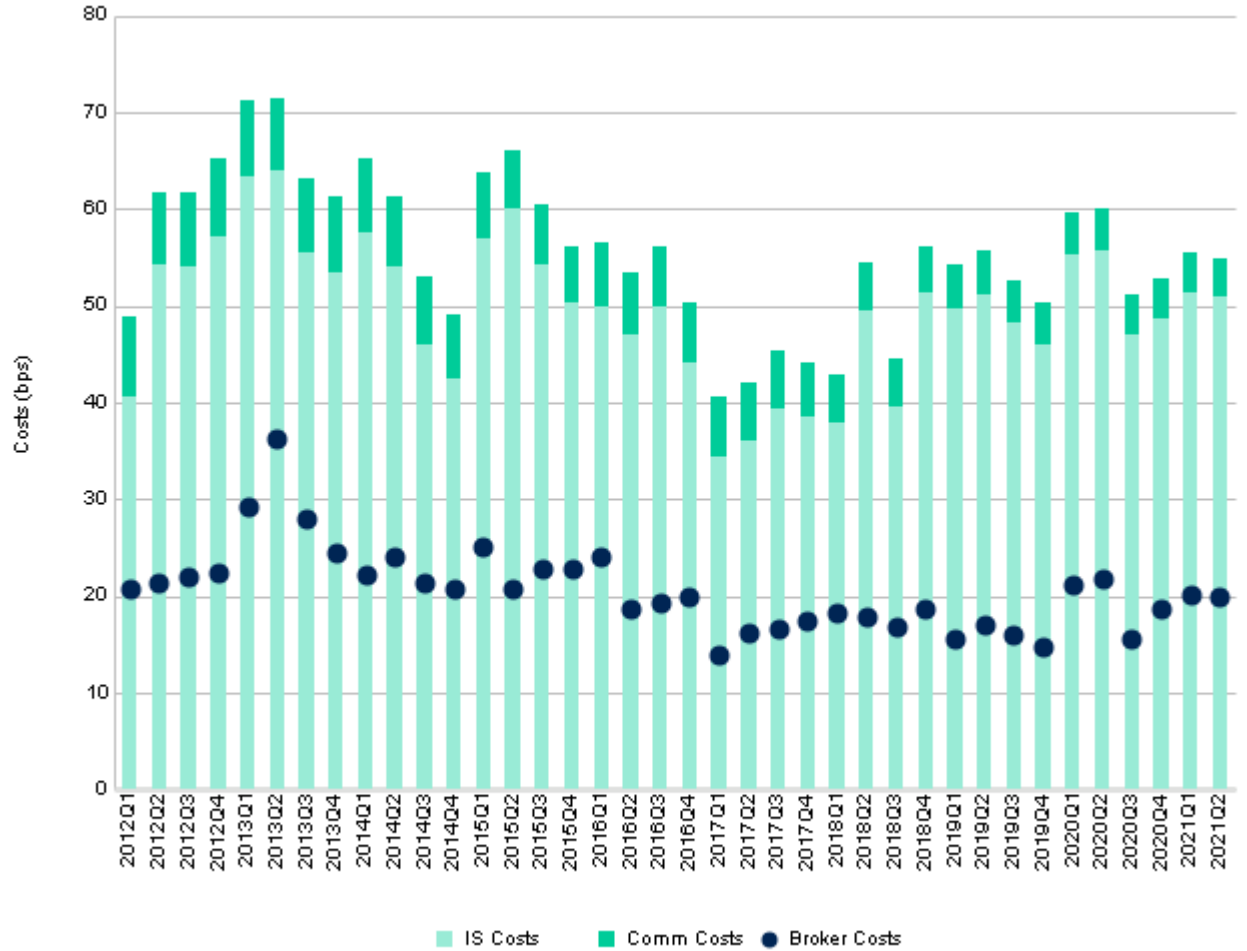
Commission (BPS)	Traded Value (USD Millions)
(0 , 2)	26,330
(2 , 4)	49,111
(4 , 6)	19,496
(6 , 8)	14,074
(8 , 10)	4,011
(10 , 12)	4,421
(12 , 14)	1,350
(14 , 16)	3,347
(16 , 18)	115
(18 , 20)	35
(20 , 22)	16
(22 , 24)	41
(24 , 26)	131
(26 , 28)	<1
(28 , 30)	<1
(30 , 32)	9
(32 , 34)	19
(34 , 36)	108
(36 , 38)	32
(38 , 40)	63
> 40	112
Total	122,821



Market Cap	Avg Commission (BPS)	Traded Value (USD Millions)
Micro Cap	7.7	147
Small Cap	6.6	1,058
Mid Cap	4.9	19,528
Large Cap	4.4	102,089
Total	4.5	122,821

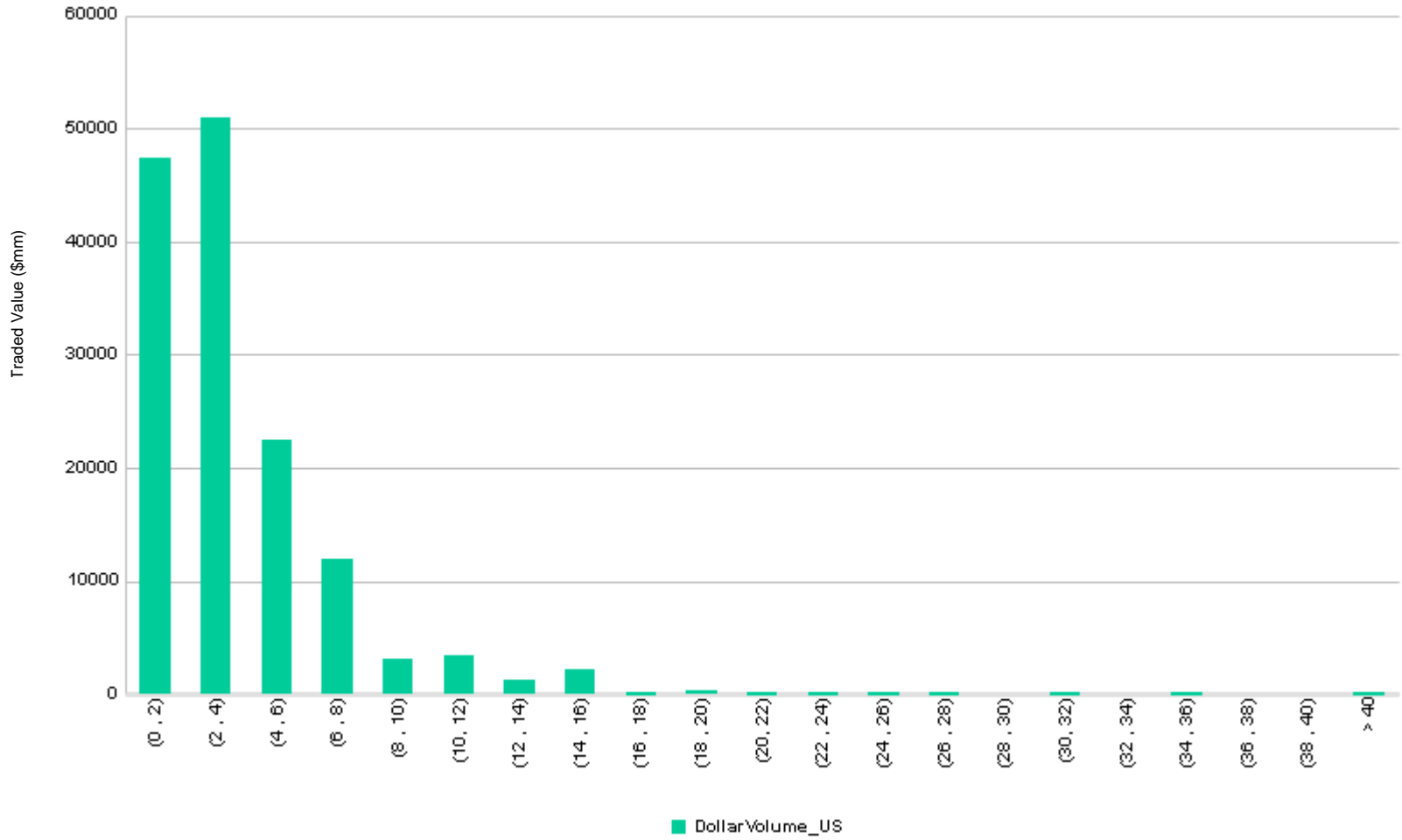
Japan (BPS)

Quarter	IS Costs	Comm Costs	Total Costs	Broker Costs
2012Q1	40.6	8.3	49.0	20.8
2012Q2	54.3	7.5	61.8	21.3
2012Q3	54.1	7.6	61.7	21.9
2012Q4	57.1	8.1	65.2	22.3
2013Q1	63.4	7.9	71.4	29.2
2013Q2	63.9	7.6	71.5	36.3
2013Q3	55.4	7.7	63.1	28.0
2013Q4	53.5	7.7	61.2	24.5
2014Q1	57.5	7.8	65.3	22.2
2014Q2	54.1	7.3	61.4	24.0
2014Q3	46.0	7.0	53.0	21.4
2014Q4	42.4	6.7	49.0	20.8
2015Q1	57.0	6.7	63.7	25.1
2015Q2	60.0	6.1	66.1	20.7
2015Q3	54.3	6.1	60.4	22.8
2015Q4	50.3	5.8	56.1	22.8
2016Q1	49.8	6.7	56.6	24.1
2016Q2	47.0	6.4	53.3	18.8
2016Q3	49.8	6.3	56.2	19.3
2016Q4	44.1	6.2	50.3	19.9
2017Q1	34.4	6.3	40.7	13.9
2017Q2	36.0	6.1	42.1	16.1
2017Q3	39.5	5.9	45.3	16.6
2017Q4	38.5	5.6	44.1	17.5
2018Q1	37.9	4.9	42.8	18.2
2018Q2	49.5	5.0	54.5	17.8
2018Q3	39.5	5.0	44.5	16.7
2018Q4	51.3	4.9	56.1	18.7
2019Q1	49.6	4.7	54.3	15.6
2019Q2	51.2	4.5	55.8	17.0
2019Q3	48.2	4.3	52.5	16.0
2019Q4	46.1	4.4	50.4	14.7
2020Q1	55.3	4.5	59.7	21.3
2020Q2	55.8	4.2	60.0	21.8
2020Q3	47.0	4.1	51.1	15.6
2020Q4	48.6	4.1	52.7	18.7
2021Q1	51.4	4.1	55.5	20.1
2021Q2	50.9	4.0	54.8	20.0



Japan Commission (BPS)

Commission (BPS)	Traded Value (USD Millions)
(0 , 2)	47,397
(2 , 4)	51,018
(4 , 6)	22,408
(6 , 8)	11,934
(8 , 10)	3,162
(10 , 12)	3,435
(12 , 14)	1,304
(14 , 16)	2,196
(16 , 18)	17
(18 , 20)	309
(20 , 22)	21
(22 , 24)	6
(24 , 26)	7
(26 , 28)	4
(28 , 30)	1
(30 , 32)	4
(32 , 34)	2
(34 , 36)	3
(36 , 38)	1
(38 , 40)	1
> 40	33
Total	143,262

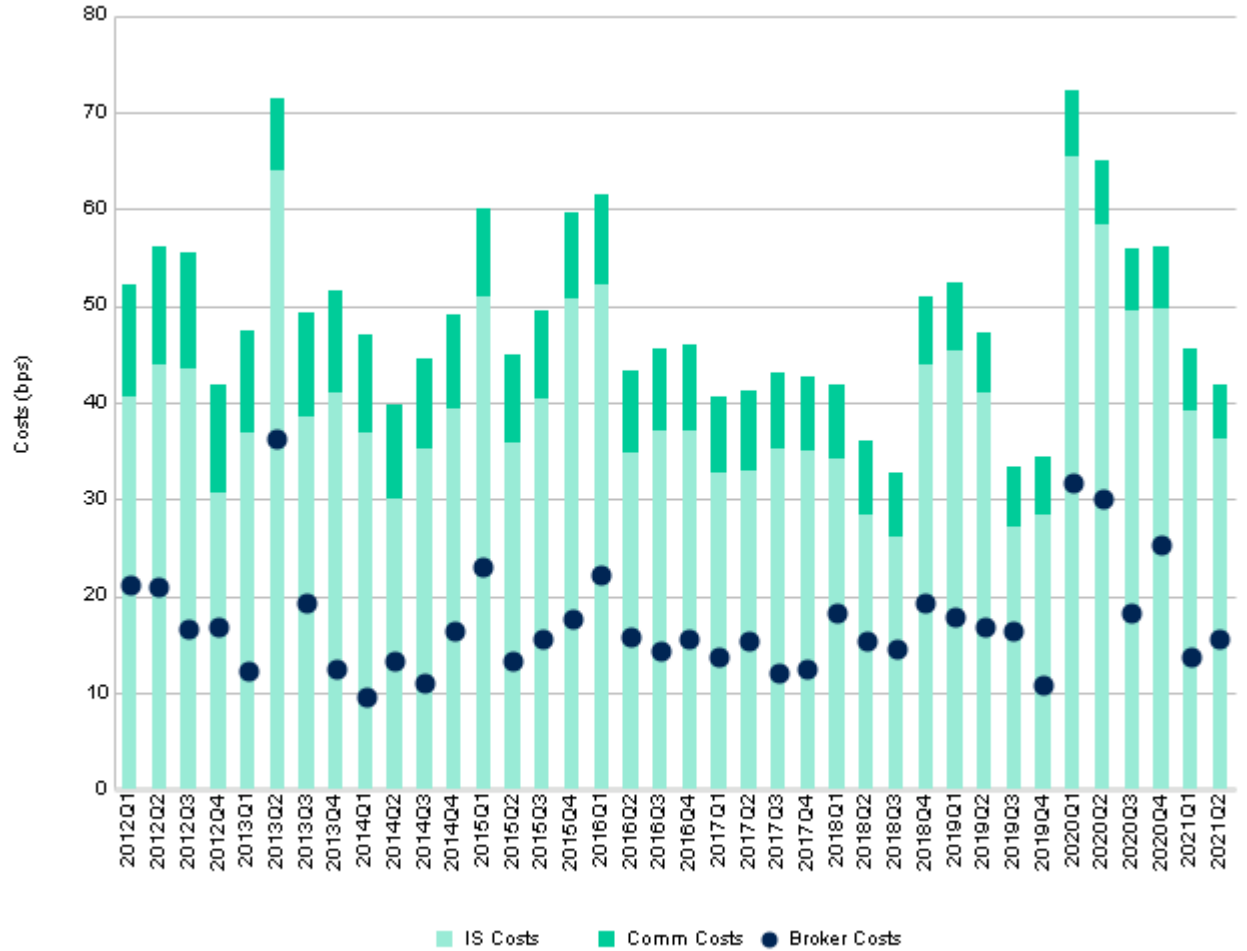


Market Cap	Avg Commission (BPS)	Traded Value (USD Millions)
Micro Cap	3.0	158
Small Cap	3.4	2,710
Mid Cap	3.8	30,345
Large Cap	4.1	110,048
Total	4.0	143,262



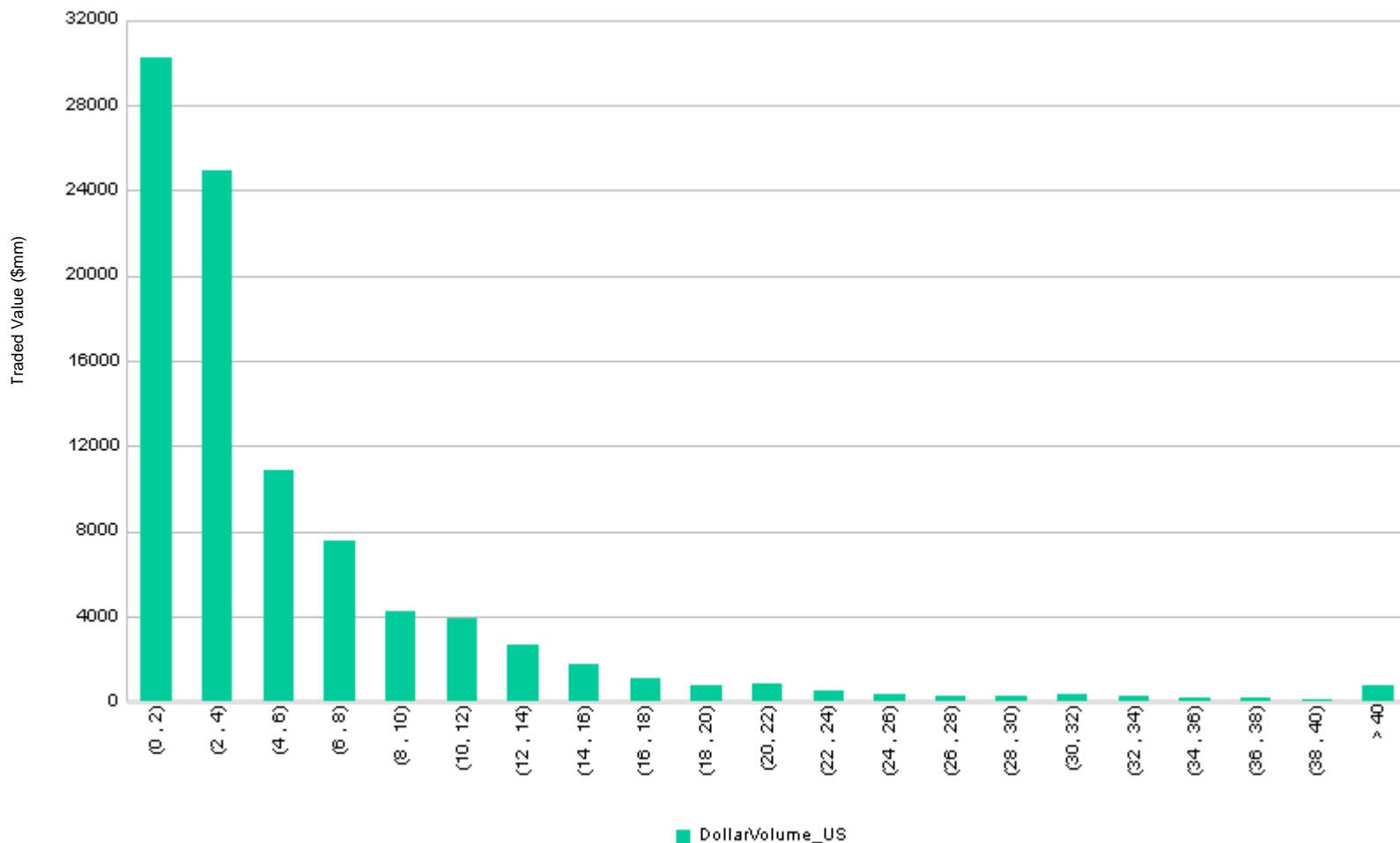
Canada (BPS)

Quarter	IS Costs	Comm Costs	Total Costs	Broker Costs
2012Q1	40.5	11.7	52.3	21.1
2012Q2	43.9	12.3	56.2	20.9
2012Q3	43.5	12.0	55.5	16.7
2012Q4	30.6	11.3	41.9	16.8
2013Q1	36.8	10.6	47.4	12.3
2013Q2	63.9	7.6	71.5	36.3
2013Q3	38.6	10.7	49.3	19.2
2013Q4	41.1	10.5	51.7	12.5
2014Q1	36.8	10.3	47.0	9.5
2014Q2	30.0	9.8	39.9	13.4
2014Q3	35.2	9.4	44.6	11.0
2014Q4	39.3	9.8	49.0	16.5
2015Q1	51.0	9.0	60.1	23.0
2015Q2	35.9	9.1	45.0	13.3
2015Q3	40.4	9.1	49.4	15.5
2015Q4	50.7	9.0	59.7	17.7
2016Q1	52.1	9.3	61.5	22.1
2016Q2	34.8	8.5	43.4	15.8
2016Q3	37.1	8.5	45.6	14.3
2016Q4	37.2	8.8	46.0	15.6
2017Q1	32.7	7.9	40.7	13.7
2017Q2	33.0	8.2	41.2	15.4
2017Q3	35.3	7.8	43.1	12.1
2017Q4	35.0	7.7	42.7	12.4
2018Q1	34.2	7.7	41.9	18.2
2018Q2	28.5	7.6	36.0	15.3
2018Q3	26.0	6.7	32.7	14.6
2018Q4	43.9	7.0	50.9	19.3
2019Q1	45.4	7.0	52.5	17.9
2019Q2	41.0	6.2	47.2	16.8
2019Q3	27.1	6.3	33.3	16.5
2019Q4	28.4	6.0	34.4	10.8
2020Q1	65.4	6.8	72.2	31.6
2020Q2	58.4	6.5	64.9	30.0
2020Q3	49.6	6.4	56.0	18.2
2020Q4	49.8	6.4	56.2	25.3
2021Q1	39.2	6.3	45.5	13.7
2021Q2	36.2	5.7	41.9	15.6



Canada Commission (BPS)

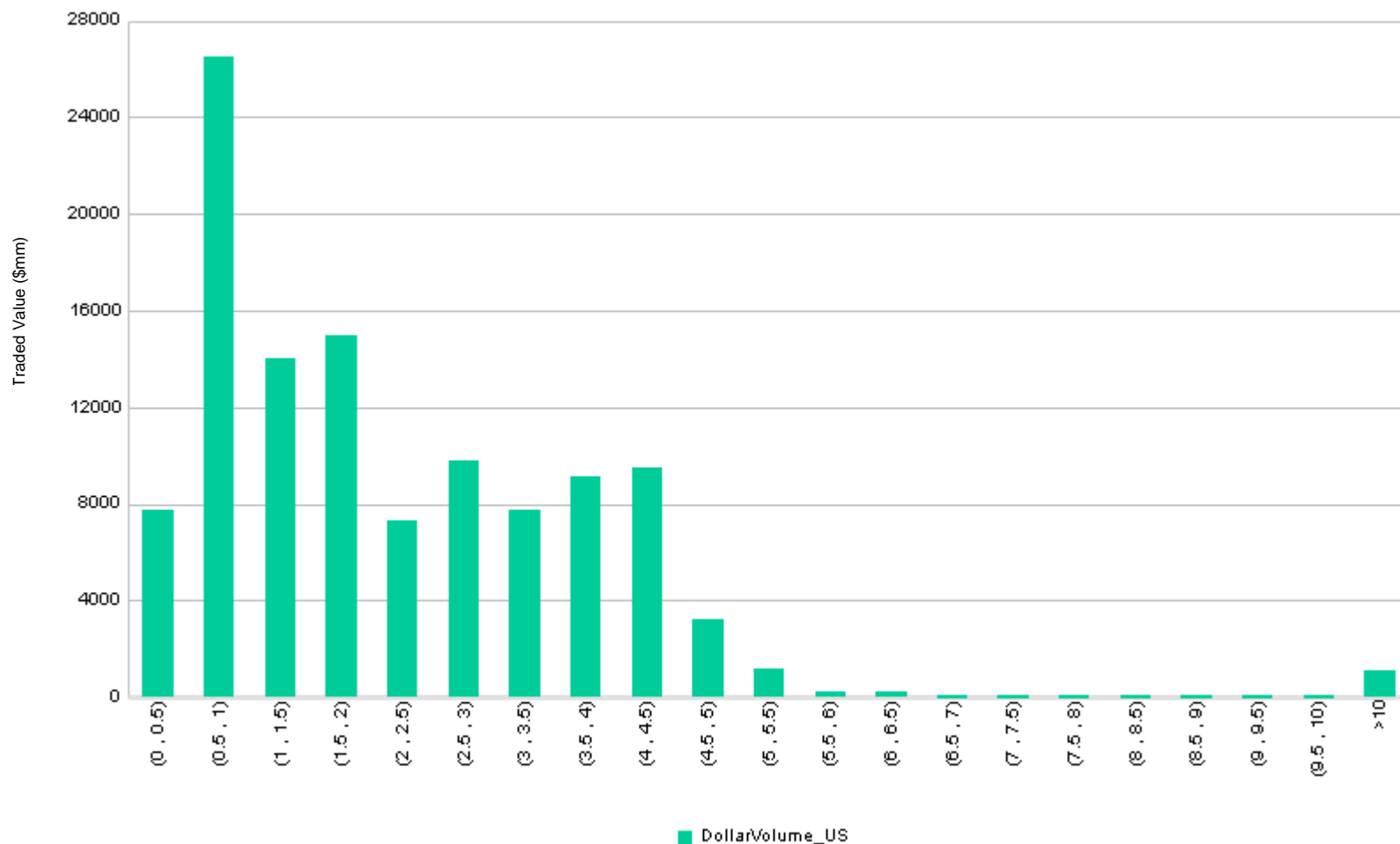
Commission (BPS)	Traded Value (USD Millions)
(0 , 2)	30,202
(2 , 4)	24,948
(4 , 6)	10,836
(6 , 8)	7,585
(8 , 10)	4,248
(10 , 12)	3,947
(12 , 14)	2,641
(14 , 16)	1,749
(16 , 18)	1,100
(18 , 20)	747
(20 , 22)	807
(22 , 24)	522
(24 , 26)	348
(26 , 28)	293
(28 , 30)	273
(30 , 32)	316
(32 , 34)	253
(34 , 36)	199
(36 , 38)	164
(38 , 40)	104
> 40	772
Total	92,054



Market Cap	Avg Commission (BPS)	Traded Value (USD Millions)
Micro Cap	10.7	937
Small Cap	12.6	2,180
Mid Cap	9.0	20,776
Large Cap	4.4	68,162
Total	5.7	92,054

Canada Commission (CAD CPS)

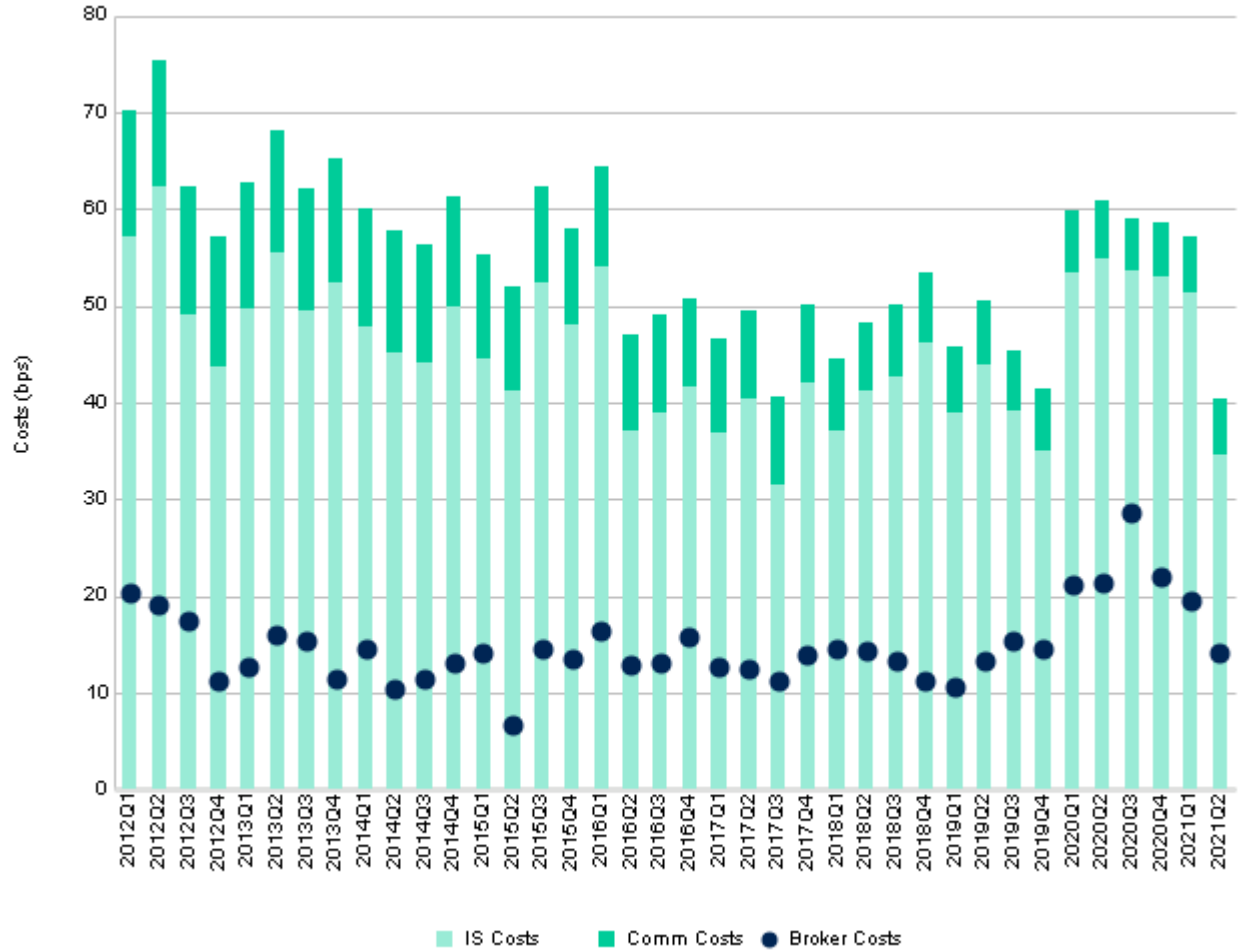
Commission (CAD CPS)	Traded Value (CAD Millions)
(0 , 0.5)	7,750
(0.5 , 1)	26,488
(1 , 1.5)	14,029
(1.5 , 2)	14,965
(2 , 2.5)	7,339
(2.5 , 3)	9,794
(3 , 3.5)	7,745
(3.5 , 4)	9,136
(4 , 4.5)	9,521
(4.5 , 5)	3,198
(5 , 5.5)	1,150
(5.5 , 6)	268
(6 , 6.5)	239
(6.5 , 7)	17
(7 , 7.5)	32
(7.5 , 8)	25
(8 , 8.5)	36
(8.5 , 9)	38
(9 , 9.5)	28
(9.5 , 10)	22
>10	1,126
Total	112,944



Market Cap	Avg Commission (CAD CPS)	Traded Value (CAD Millions)
Micro Cap	0.8	1,153
Small Cap	1.0	2,678
Mid Cap	1.3	25,535
Large Cap	1.6	83,579
Total	1.5	112,944

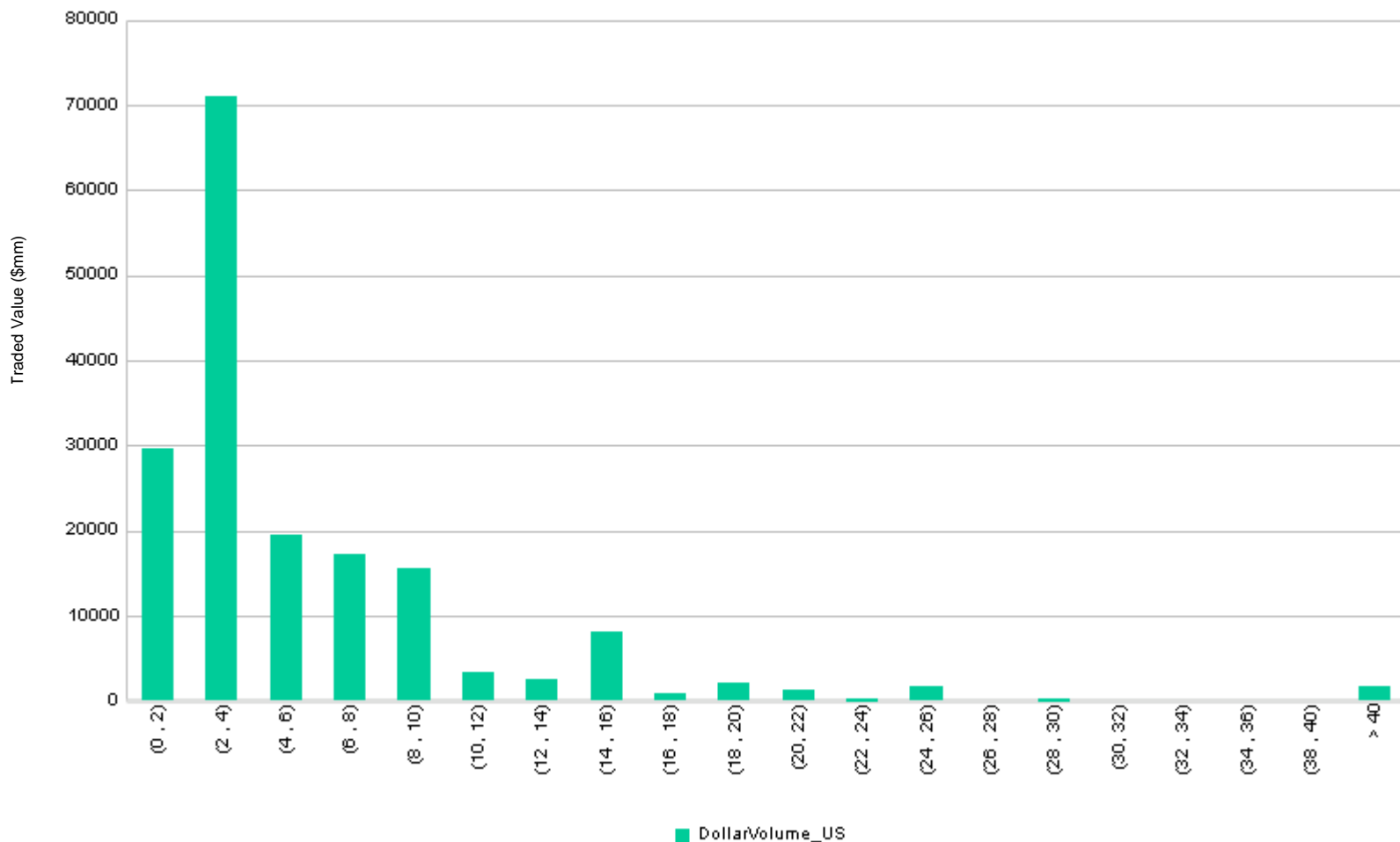
Asia Pacific ex - Japan(BPS)

Quarter	IS Costs	Comm Costs	Total Costs	Broker Costs
2012Q1	57.1	13.0	70.1	20.4
2012Q2	62.4	13.0	75.5	19.0
2012Q3	49.0	13.3	62.3	17.5
2012Q4	43.8	13.3	57.1	11.3
2013Q1	49.8	13.0	62.8	12.7
2013Q2	55.5	12.6	68.1	16.0
2013Q3	49.5	12.6	62.1	15.3
2013Q4	52.5	12.7	65.1	11.5
2014Q1	47.8	12.3	60.1	14.6
2014Q2	45.2	12.5	57.7	10.4
2014Q3	44.2	12.1	56.3	11.4
2014Q4	49.8	11.4	61.3	13.0
2015Q1	44.5	10.9	55.4	14.1
2015Q2	41.1	11.0	52.1	6.7
2015Q3	52.3	10.0	62.3	14.5
2015Q4	48.1	9.9	57.9	13.4
2016Q1	54.1	10.3	64.4	16.5
2016Q2	37.1	9.9	47.1	12.8
2016Q3	39.0	10.1	49.1	13.1
2016Q4	41.6	9.2	50.8	15.8
2017Q1	36.9	9.6	46.5	12.6
2017Q2	40.4	9.1	49.5	12.5
2017Q3	31.6	9.1	40.6	11.2
2017Q4	42.1	8.1	50.2	13.9
2018Q1	37.1	7.3	44.5	14.6
2018Q2	41.2	7.0	48.2	14.3
2018Q3	42.7	7.4	50.1	13.3
2018Q4	46.2	7.2	53.4	11.1
2019Q1	38.9	6.8	45.7	10.7
2019Q2	44.0	6.6	50.6	13.4
2019Q3	39.2	6.2	45.4	15.3
2019Q4	35.1	6.3	41.3	14.6
2020Q1	53.4	6.4	59.8	21.3
2020Q2	54.8	6.1	60.9	21.4
2020Q3	53.6	5.5	59.1	28.6
2020Q4	53.1	5.6	58.7	22.0
2021Q1	51.4	5.8	57.1	19.4
2021Q2	34.7	5.8	40.5	14.2



Asia Pacific ex - Japan Commission (BPS)

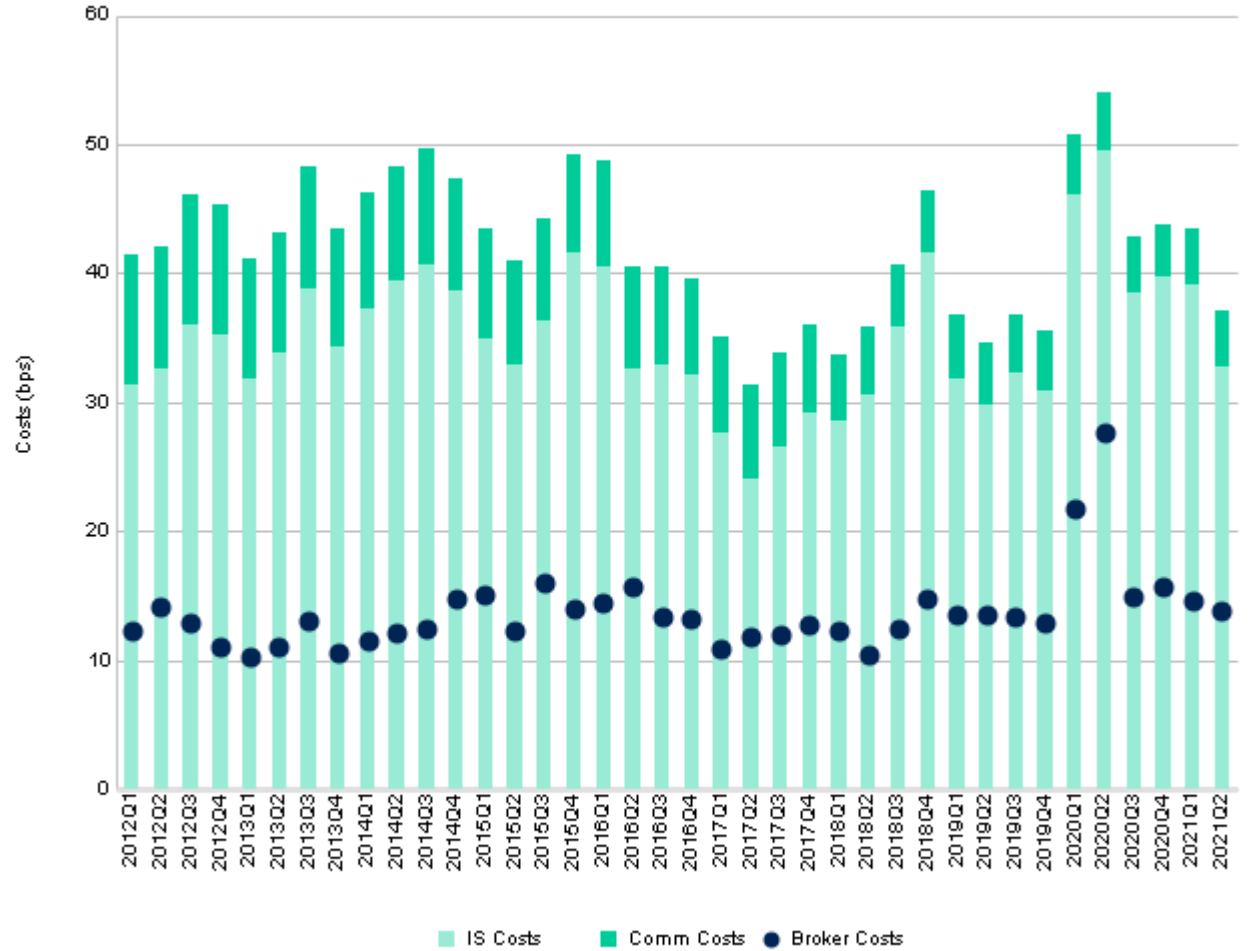
Commission (BPS)	Traded Value (USD Millions)
(0 , 2)	29,676
(2 , 4)	71,044
(4 , 6)	19,529
(6 , 8)	17,219
(8 , 10)	15,497
(10 , 12)	3,327
(12 , 14)	2,597
(14 , 16)	8,163
(16 , 18)	795
(18 , 20)	2,154
(20 , 22)	1,265
(22 , 24)	47
(24 , 26)	1,609
(26 , 28)	<1
(28 , 30)	93
(30 , 32)	2
(32 , 34)	<1
(34 , 36)	1
(38 , 40)	<1
> 40	1,599
Total	174,617



Market Cap	Avg Commission (BPS)	Traded Value (USD Millions)
Micro Cap	7.0	71
Small Cap	5.5	840
Mid Cap	6.1	26,099
Large Cap	5.8	147,607
Total	5.8	174,617

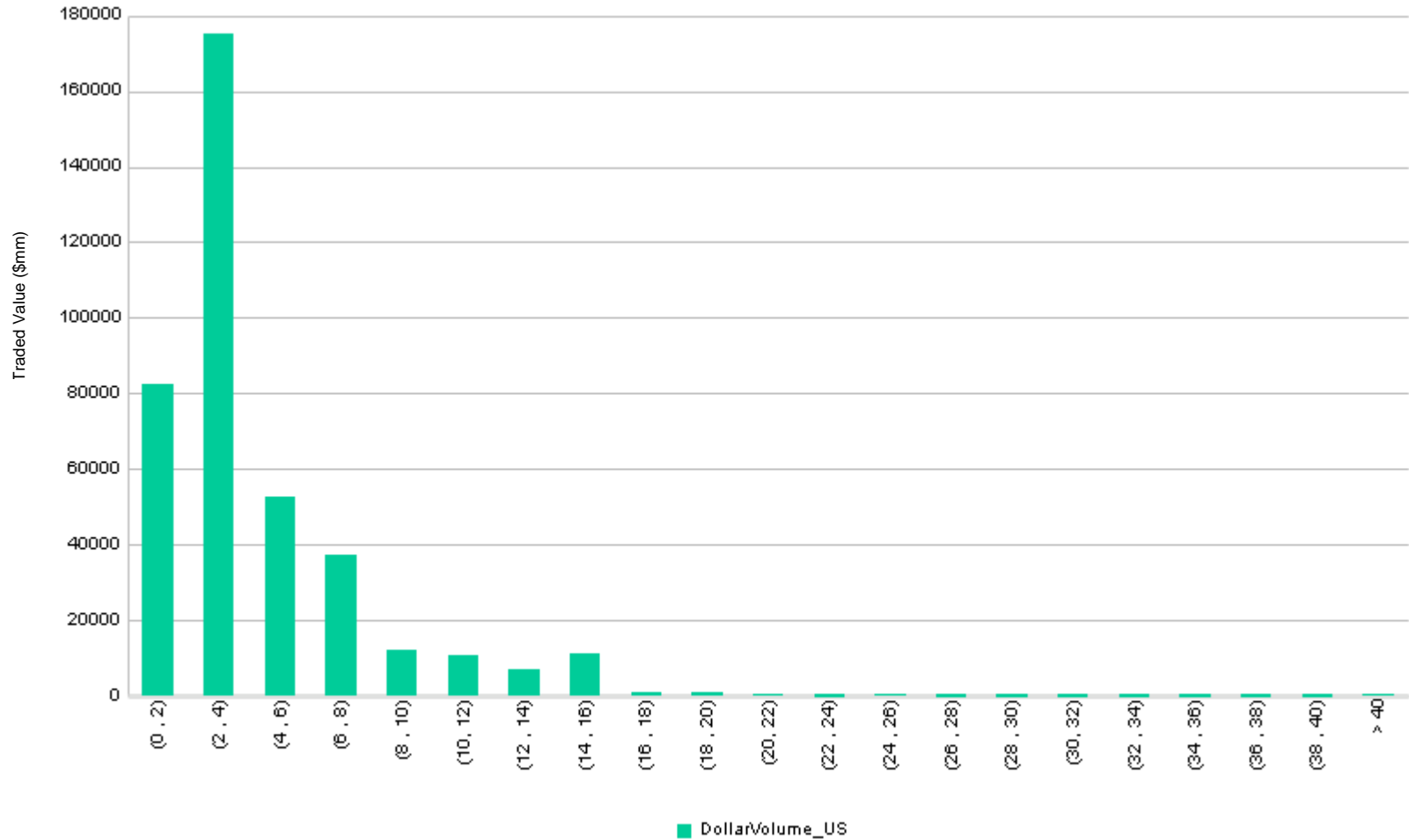
Europe ex - UK (BPS)

Quarter	IS Costs	Comm Costs	Total Costs	Broker_BPS
2012Q1	31.4	10.0	41.4	12.3
2012Q2	32.6	9.5	42.1	14.1
2012Q3	36.1	10.0	46.1	12.9
2012Q4	35.2	10.1	45.3	11.1
2013Q1	31.8	9.4	41.3	10.3
2013Q2	33.9	9.3	43.2	11.1
2013Q3	38.8	9.5	48.4	13.0
2013Q4	34.4	9.1	43.4	10.6
2014Q1	37.3	9.0	46.3	11.6
2014Q2	39.4	8.9	48.3	12.2
2014Q3	40.7	9.0	49.6	12.5
2014Q4	38.7	8.7	47.4	14.8
2015Q1	35.0	8.5	43.5	15.2
2015Q2	32.9	8.1	41.0	12.3
2015Q3	36.3	7.9	44.1	16.0
2015Q4	41.7	7.6	49.3	14.0
2016Q1	40.5	8.3	48.7	14.5
2016Q2	32.7	7.8	40.5	15.8
2016Q3	33.0	7.6	40.6	13.3
2016Q4	32.1	7.4	39.5	13.3
2017Q1	27.7	7.4	35.1	10.9
2017Q2	24.1	7.3	31.4	11.8
2017Q3	26.6	7.3	33.9	12.0
2017Q4	29.2	6.9	36.1	12.8
2018Q1	28.6	5.2	33.7	12.3
2018Q2	30.7	5.2	35.9	10.5
2018Q3	35.9	4.9	40.8	12.4
2018Q4	41.6	4.8	46.4	14.8
2019Q1	31.9	4.9	36.8	13.5
2019Q2	29.8	4.8	34.6	13.6
2019Q3	32.3	4.6	36.9	13.3
2019Q4	30.9	4.7	35.6	12.9
2020Q1	46.1	4.8	50.8	21.7
2020Q2	49.6	4.4	54.0	27.6
2020Q3	38.5	4.4	42.9	14.9
2020Q4	39.7	4.2	43.9	15.7
2021Q1	39.1	4.3	43.4	14.6
2021Q2	32.7	4.4	37.1	13.8



Europe ex - UK Commission (BPS)

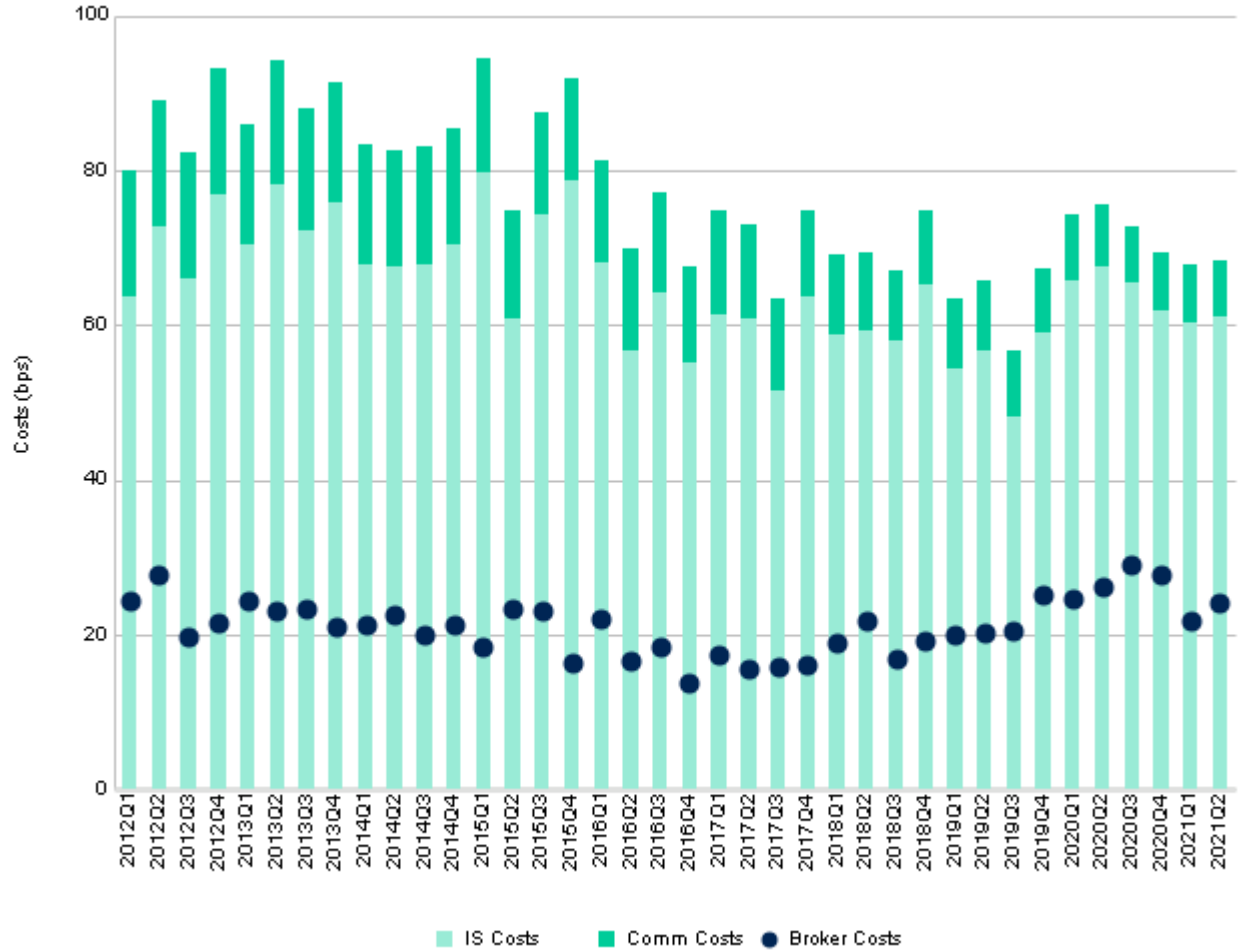
Commission (BPS)	Traded Value (USD Millions)
(0 , 2)	82,324
(2 , 4)	175,085
(4 , 6)	52,743
(6 , 8)	37,345
(8 , 10)	12,127
(10 , 12)	10,974
(12 , 14)	7,032
(14 , 16)	11,162
(16 , 18)	1,155
(18 , 20)	1,109
(20 , 22)	513
(22 , 24)	130
(24 , 26)	343
(26 , 28)	12
(28 , 30)	11
(30 , 32)	13
(32 , 34)	16
(34 , 36)	131
(36 , 38)	77
(38 , 40)	116
> 40	411
Total	392,832



Market Cap	Avg Commission (BPS)	Traded Value (USD Millions)
Micro Cap	6.7	149
Small Cap	5.3	1,244
Mid Cap	4.7	33,488
Large Cap	4.4	357,951
Total	4.4	392,832

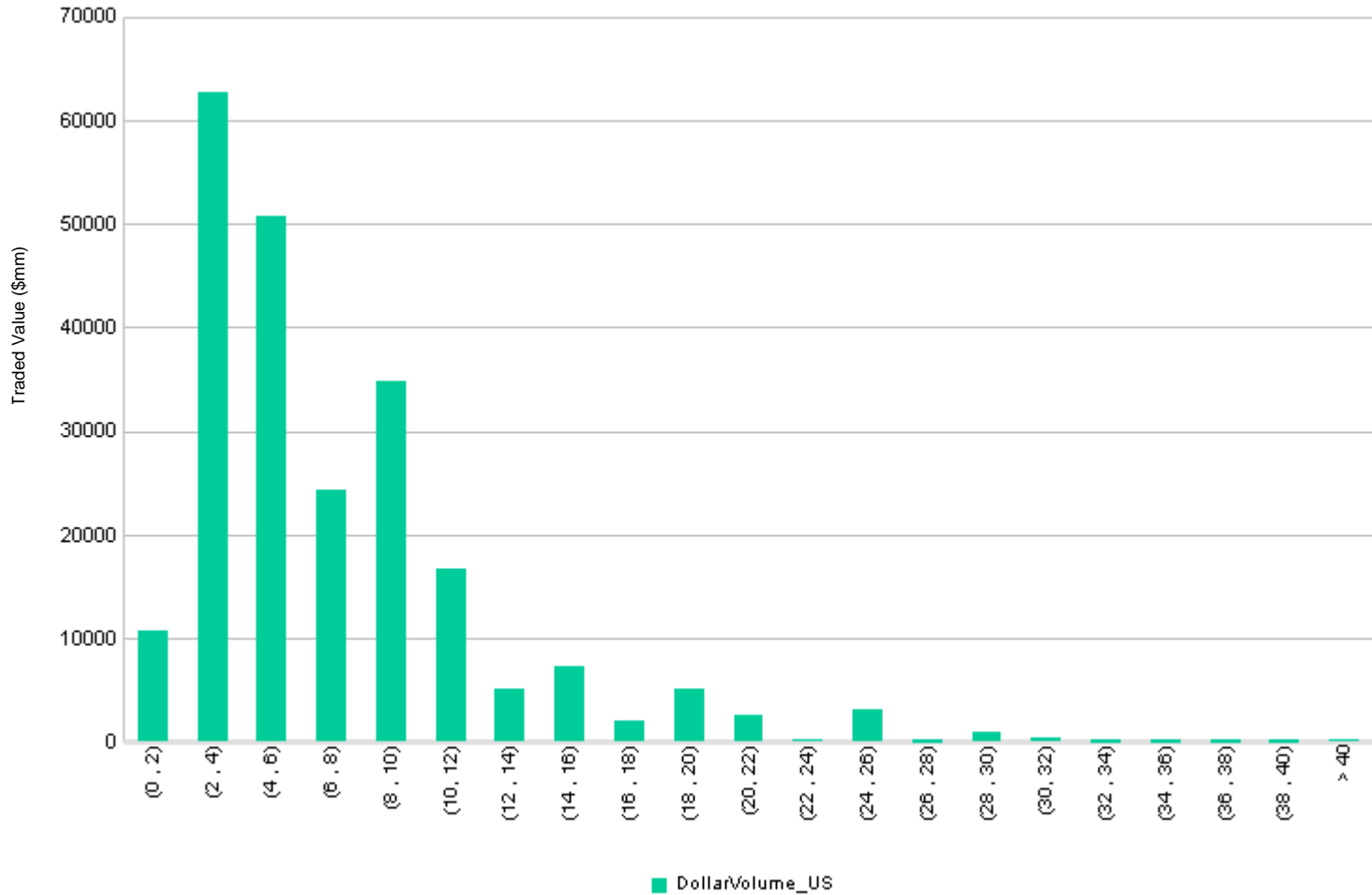
Emerging Markets (BPS)

Quarter	IS Costs	Comm Costs	Total Costs	Broker Costs
2012Q1	63.8	16.2	80.0	24.5
2012Q2	72.8	16.2	89.1	27.7
2012Q3	66.0	16.3	82.3	19.6
2012Q4	77.0	16.2	93.3	21.5
2013Q1	70.3	15.7	86.0	24.3
2013Q2	78.1	16.0	94.1	23.1
2013Q3	72.3	15.8	88.1	23.3
2013Q4	75.8	15.5	91.3	21.0
2014Q1	67.7	15.6	83.3	21.3
2014Q2	67.5	15.1	82.6	22.6
2014Q3	67.8	15.4	83.2	20.0
2014Q4	70.4	14.9	85.3	21.2
2015Q1	79.8	14.6	94.4	18.4
2015Q2	60.9	14.0	74.9	23.5
2015Q3	74.3	13.2	87.5	23.0
2015Q4	78.7	13.1	91.8	16.5
2016Q1	68.0	13.4	81.3	22.1
2016Q2	56.6	13.3	69.9	16.5
2016Q3	64.3	12.9	77.3	18.4
2016Q4	55.0	12.7	67.7	13.8
2017Q1	61.3	13.5	74.8	17.5
2017Q2	60.9	12.3	73.1	15.6
2017Q3	51.5	12.0	63.6	15.8
2017Q4	63.6	11.1	74.7	16.2
2018Q1	58.9	10.3	69.2	19.0
2018Q2	59.3	9.9	69.3	21.7
2018Q3	57.9	9.3	67.2	17.0
2018Q4	65.3	9.4	74.8	19.1
2019Q1	54.3	9.0	63.3	20.0
2019Q2	56.8	9.1	65.8	20.2
2019Q3	48.3	8.4	56.7	20.4
2019Q4	59.0	8.3	67.3	25.2
2020Q1	65.8	8.5	74.3	24.5
2020Q2	67.5	8.2	75.6	26.1
2020Q3	65.4	7.4	72.8	29.0
2020Q4	61.9	7.4	69.3	27.8
2021Q1	60.3	7.5	67.8	21.7
2021Q2	61.2	7.3	68.4	24.2



Emerging Markets Commission (BPS)

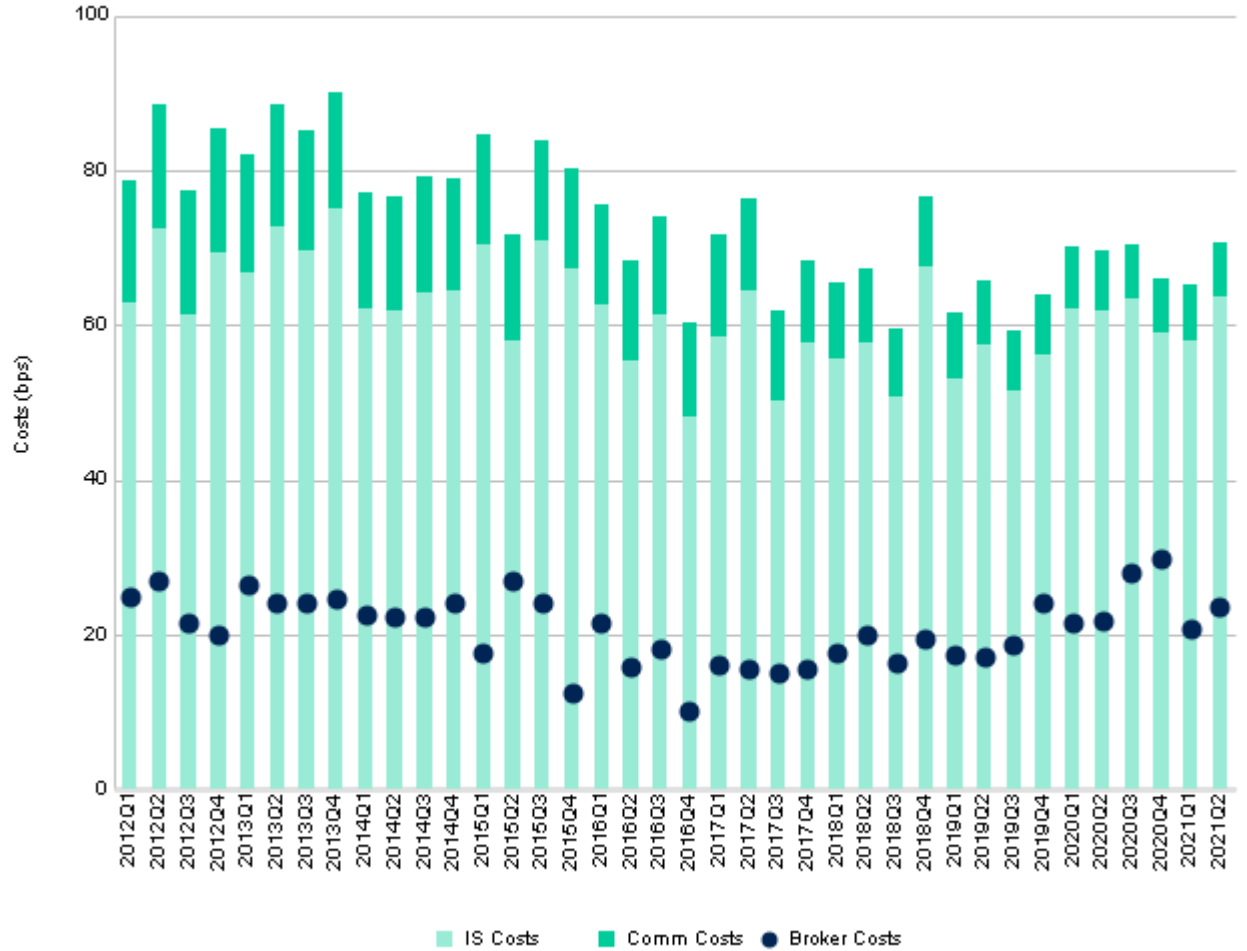
Commission (BPS)	Traded Value (USD Millions)
(0 , 2)	10,748
(2 , 4)	62,703
(4 , 6)	50,663
(6 , 8)	24,297
(8 , 10)	34,801
(10 , 12)	16,682
(12 , 14)	5,045
(14 , 16)	7,317
(16 , 18)	1,960
(18 , 20)	5,118
(20 , 22)	2,580
(22 , 24)	206
(24 , 26)	3,188
(26 , 28)	113
(28 , 30)	857
(30 , 32)	408
(32 , 34)	26
(34 , 36)	41
(36 , 38)	3
(38 , 40)	61
> 40	250
Total	227,068



Market Cap	Avg Commission (BPS)	Traded Value (USD Millions)
Micro Cap	8.9	323
Small Cap	7.2	2,860
Mid Cap	7.4	50,317
Large Cap	7.3	173,567
Total	7.3	227,068

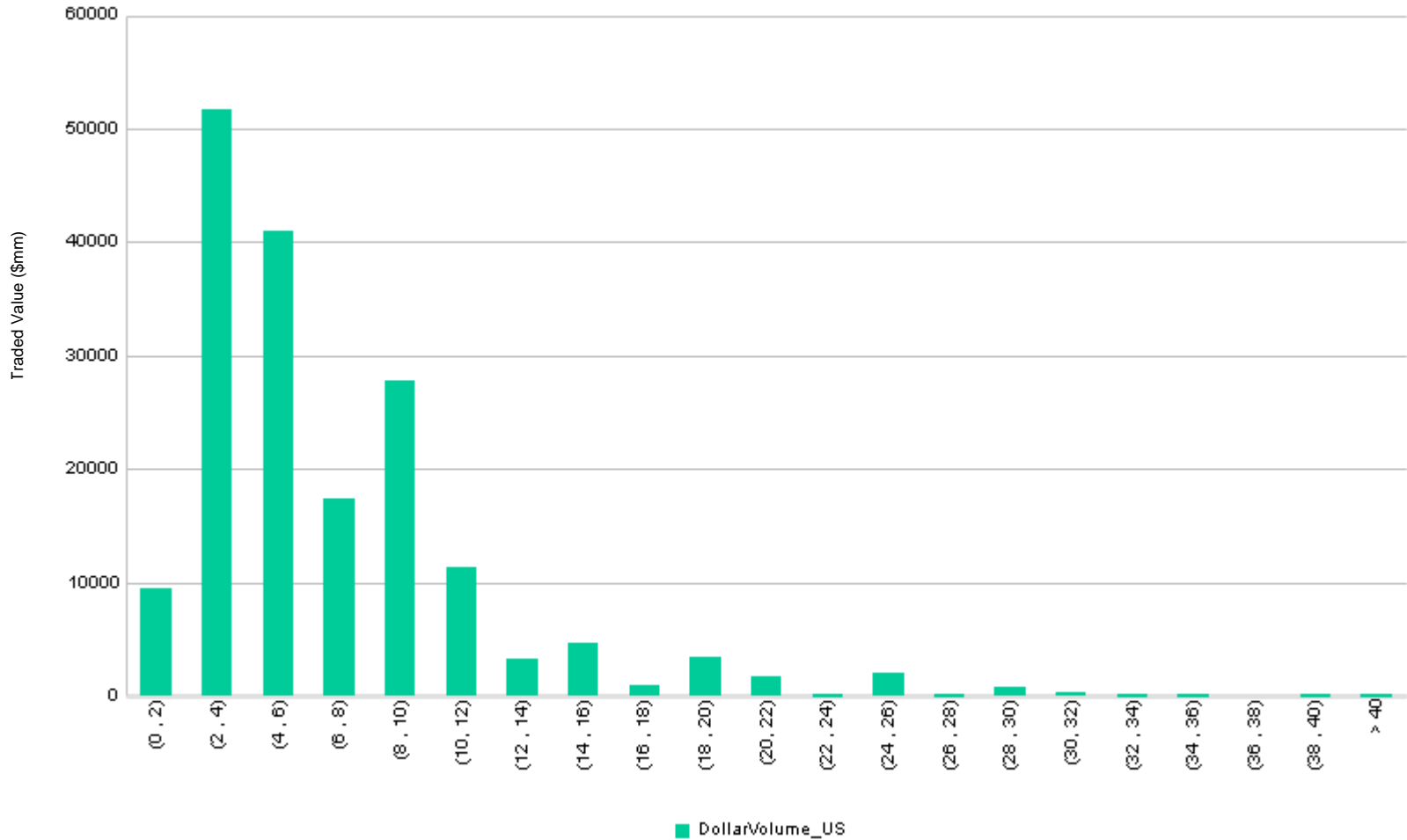
Emerging Asia (BPS)

Quarter	IS Costs	Comm Costs	Total Costs	Broker Costs
2012Q1	62.9	15.9	78.7	24.9
2012Q2	72.5	15.9	88.5	26.9
2012Q3	61.4	15.9	77.3	21.6
2012Q4	69.4	15.9	85.3	20.0
2013Q1	66.8	15.3	82.1	26.4
2013Q2	72.8	15.8	88.6	24.1
2013Q3	69.7	15.5	85.2	24.2
2013Q4	75.1	15.0	90.0	24.6
2014Q1	62.1	15.1	77.1	22.5
2014Q2	61.8	14.7	76.5	22.4
2014Q3	64.3	15.0	79.3	22.3
2014Q4	64.6	14.5	79.0	24.2
2015Q1	70.4	14.3	84.7	17.7
2015Q2	58.1	13.7	71.8	26.9
2015Q3	70.9	12.9	83.8	24.1
2015Q4	67.4	12.9	80.3	12.4
2016Q1	62.6	12.9	75.5	21.4
2016Q2	55.5	12.8	68.3	15.9
2016Q3	61.4	12.6	74.0	18.1
2016Q4	48.0	12.3	60.4	10.2
2017Q1	58.5	13.1	71.6	16.0
2017Q2	64.4	11.9	76.3	15.6
2017Q3	50.3	11.5	61.8	15.1
2017Q4	57.6	10.7	68.3	15.7
2018Q1	55.6	10.0	65.6	17.6
2018Q2	57.8	9.5	67.3	20.0
2018Q3	50.6	9.0	59.7	16.3
2018Q4	67.6	9.1	76.7	19.4
2019Q1	53.1	8.6	61.7	17.3
2019Q2	57.4	8.3	65.8	17.2
2019Q3	51.6	7.6	59.2	18.8
2019Q4	56.1	7.8	63.8	24.2
2020Q1	62.1	8.0	70.2	21.7
2020Q2	61.9	7.6	69.5	21.8
2020Q3	63.5	7.0	70.5	28.1
2020Q4	59.1	6.9	66.0	29.7
2021Q1	58.1	7.2	65.3	20.7
2021Q2	63.7	6.9	70.6	23.7



Emerging Asia Commission (BPS)

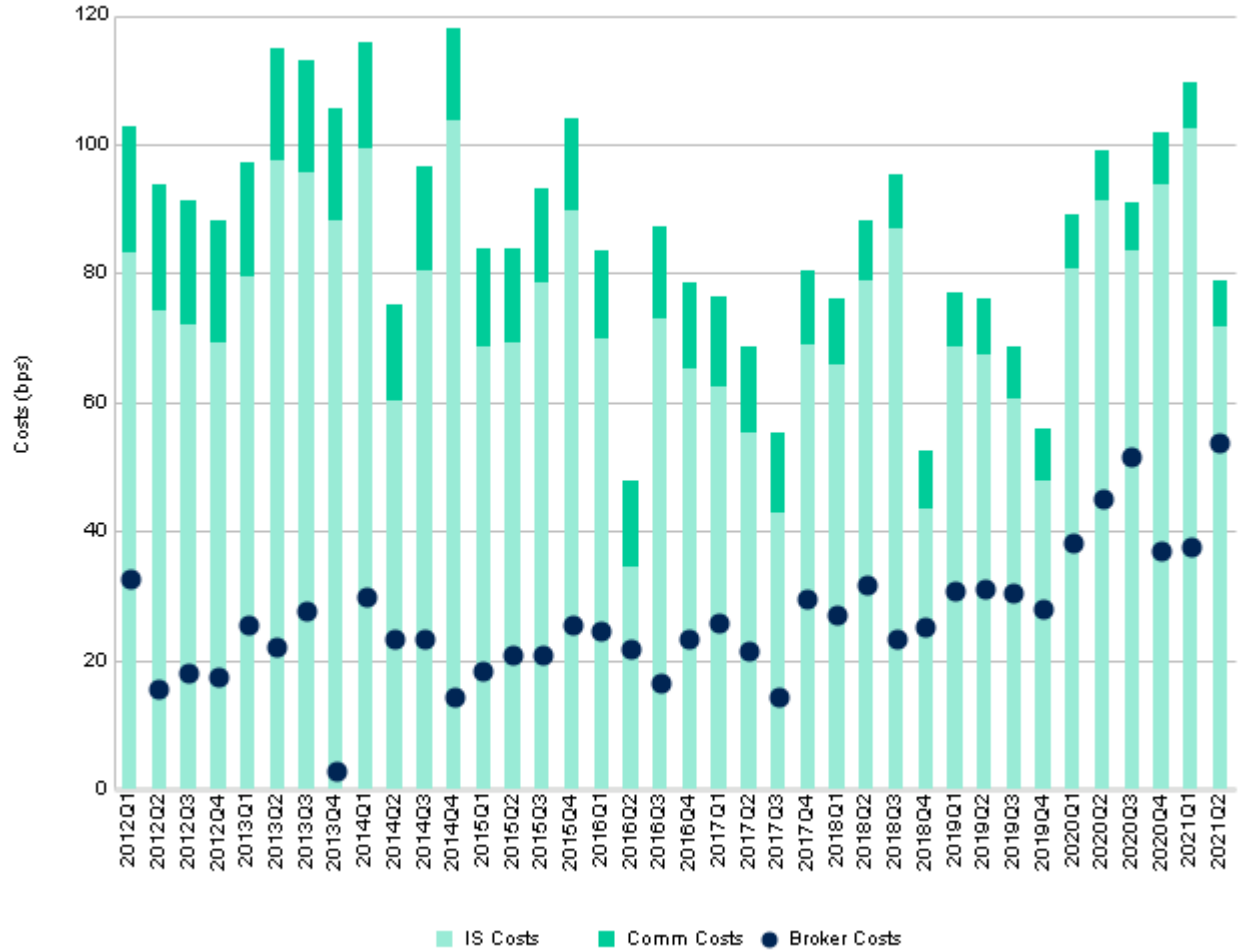
Commission (BPS)	Traded Value (USD Millions)
(0 , 2)	9,465
(2 , 4)	51,654
(4 , 6)	41,055
(6 , 8)	17,347
(8 , 10)	27,749
(10 , 12)	11,397
(12 , 14)	3,279
(14 , 16)	4,651
(16 , 18)	915
(18 , 20)	3,478
(20 , 22)	1,671
(22 , 24)	101
(24 , 26)	2,120
(26 , 28)	61
(28 , 30)	801
(30 , 32)	380
(32 , 34)	8
(34 , 36)	7
(36 , 38)	2
(38 , 40)	42
> 40	98
Total	176,281



Market Cap	Avg Commission (BPS)	Traded Value (USD Millions)
Micro Cap	8.2	284
Small Cap	6.7	2,208
Mid Cap	7.0	36,576
Large Cap	6.9	137,212
Total	6.9	176,281

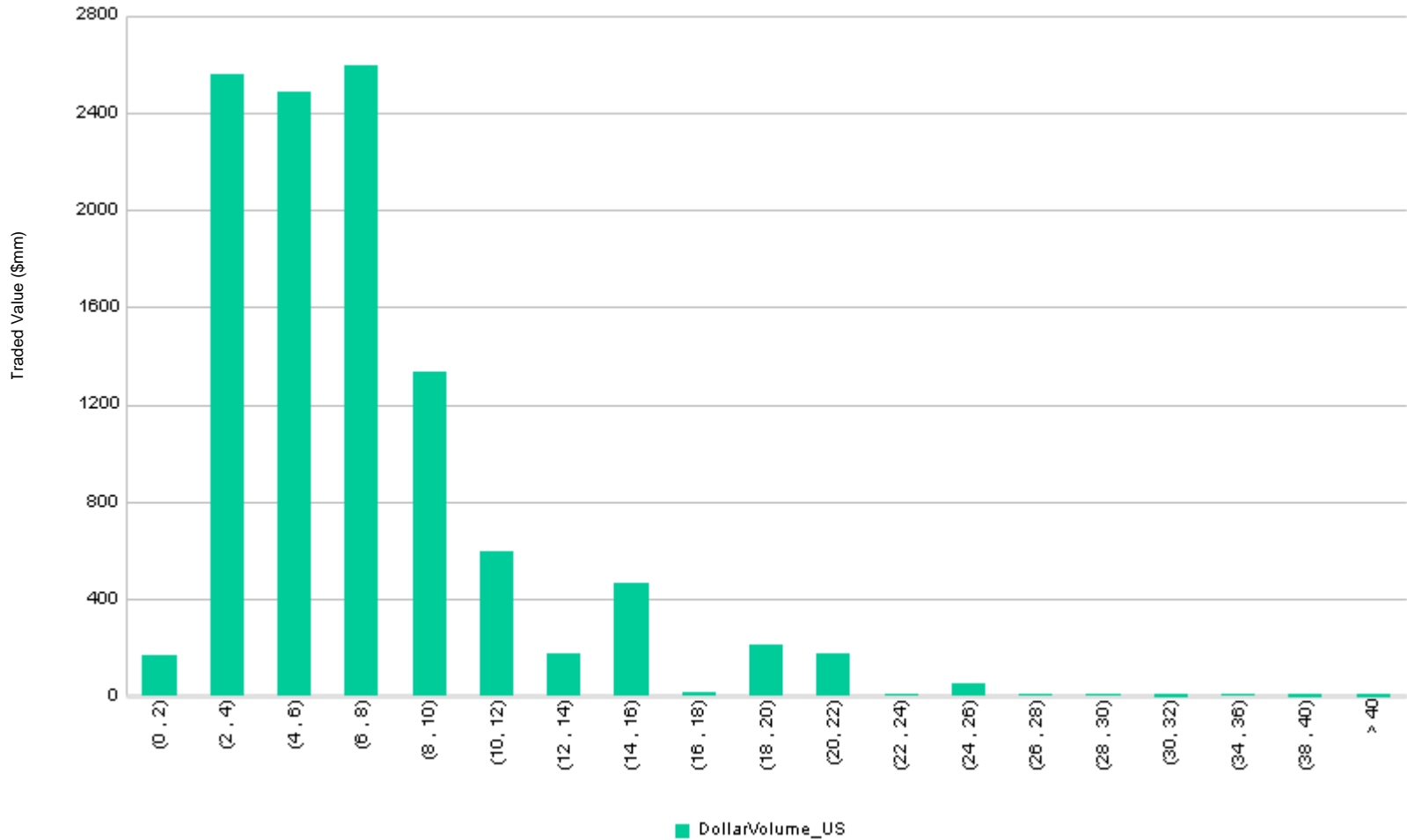
Emerging Europe (BPS)

Quarter	IS Costs	Comm Costs	Total Costs	Broker Costs
2012Q1	83.2	19.6	102.8	32.8
2012Q2	74.4	19.4	93.8	15.7
2012Q3	72.1	19.3	91.4	18.2
2012Q4	69.4	18.8	88.2	17.6
2013Q1	79.4	17.7	97.1	25.4
2013Q2	97.4	17.5	114.9	22.0
2013Q3	95.7	17.5	113.1	27.6
2013Q4	88.3	17.4	105.7	2.8
2014Q1	99.4	16.6	116.0	30.0
2014Q2	60.2	15.0	75.2	23.3
2014Q3	80.6	16.1	96.7	23.3
2014Q4	103.8	14.1	118.0	14.2
2015Q1	68.5	15.3	83.8	18.4
2015Q2	69.3	14.7	83.9	20.9
2015Q3	78.5	14.7	93.2	21.0
2015Q4	89.7	14.5	104.2	25.5
2016Q1	69.8	13.7	83.5	24.6
2016Q2	34.4	13.5	47.8	21.9
2016Q3	73.1	14.3	87.4	16.5
2016Q4	65.2	13.4	78.6	23.4
2017Q1	62.3	14.2	76.6	25.8
2017Q2	55.2	13.3	68.5	21.6
2017Q3	42.9	12.6	55.4	14.4
2017Q4	69.0	11.6	80.6	29.7
2018Q1	66.0	10.2	76.2	27.2
2018Q2	79.0	9.3	88.3	31.9
2018Q3	87.0	8.5	95.5	23.2
2018Q4	43.6	9.0	52.6	25.3
2019Q1	68.7	8.4	77.1	30.8
2019Q2	67.5	8.7	76.2	31.1
2019Q3	60.6	8.1	68.6	30.6
2019Q4	47.9	7.9	55.8	28.1
2020Q1	80.8	8.3	89.1	38.3
2020Q2	91.3	7.8	99.1	45.0
2020Q3	83.6	7.4	90.9	51.6
2020Q4	93.8	8.1	101.9	37.0
2021Q1	102.4	7.4	109.8	37.5
2021Q2	71.6	7.2	78.8	53.8



Emerging Europe Commission (BPS)

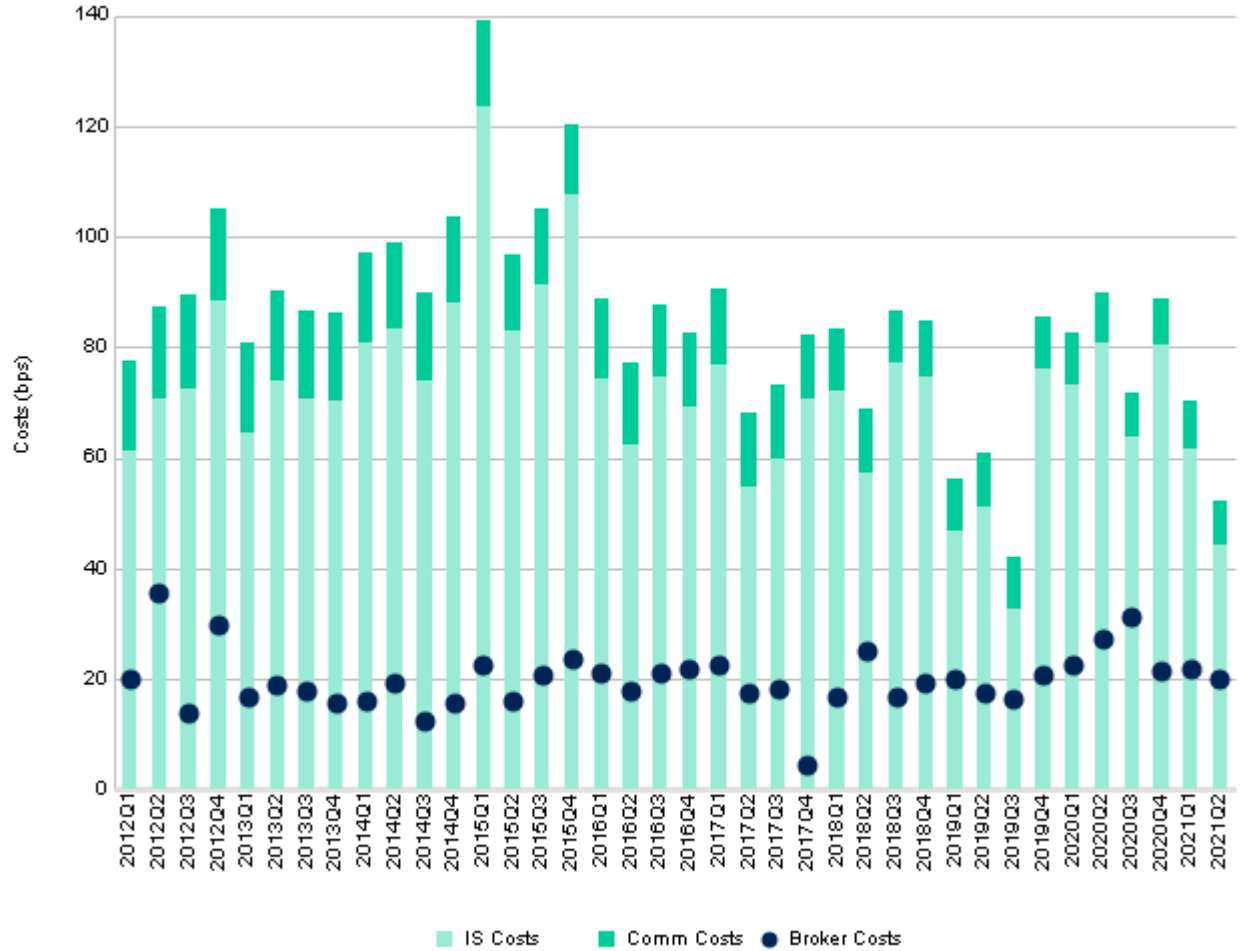
Commission (BPS)	Traded Value (USD Millions)
(0 , 2)	169
(2 , 4)	2,561
(4 , 6)	2,485
(6 , 8)	2,592
(8 , 10)	1,331
(10 , 12)	595
(12 , 14)	177
(14 , 16)	462
(16 , 18)	13
(18 , 20)	212
(20 , 22)	173
(22 , 24)	12
(24 , 26)	48
(26 , 28)	12
(28 , 30)	6
(30 , 32)	1
(34 , 36)	8
(38 , 40)	1
> 40	3
Total	10,860



Market Cap	Avg Commission (BPS)	Traded Value (USD Millions)
Micro Cap	9.6	12
Small Cap	6.3	153
Mid Cap	7.1	3,576
Large Cap	7.3	7,120
Total	7.2	10,860

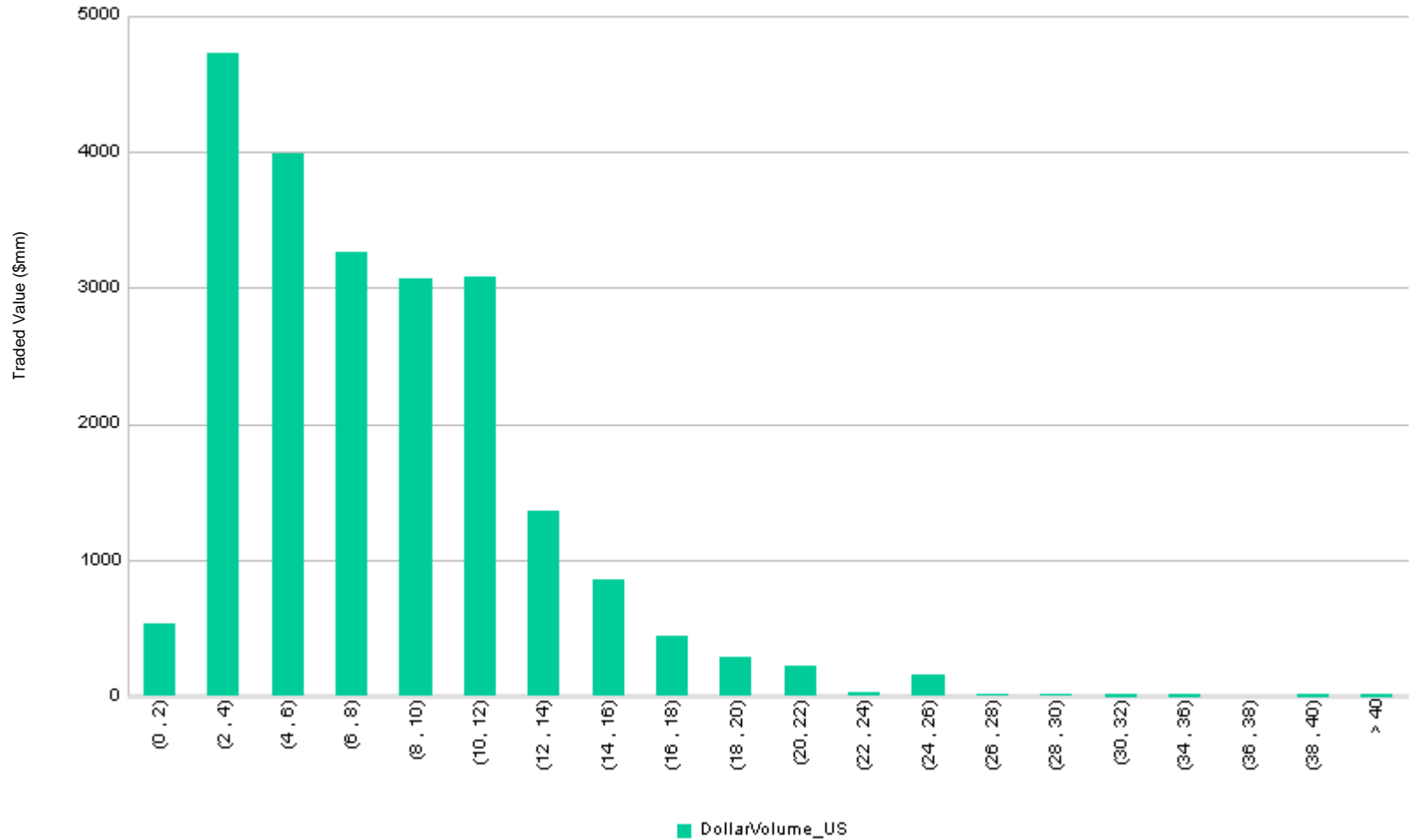
Latin America (BPS)

Quarter	IS Costs	Comm Costs	Total Costs	Broker Costs
2012Q1	61.1	16.5	77.7	20.0
2012Q2	70.8	16.5	87.3	35.5
2012Q3	72.6	16.8	89.5	14.0
2012Q4	88.5	16.6	105.1	29.8
2013Q1	64.6	16.2	80.8	16.9
2013Q2	74.1	16.1	90.2	18.9
2013Q3	70.7	15.9	86.6	17.9
2013Q4	70.5	15.8	86.4	15.8
2014Q1	80.9	16.2	97.1	16.2
2014Q2	83.5	15.5	99.0	19.4
2014Q3	73.9	15.9	89.8	12.3
2014Q4	88.1	15.5	103.5	15.7
2015Q1	123.6	15.4	139.0	22.5
2015Q2	82.9	14.0	96.9	16.1
2015Q3	91.3	13.7	104.9	20.6
2015Q4	107.5	12.9	120.3	23.7
2016Q1	74.5	14.4	88.9	21.0
2016Q2	62.4	14.7	77.1	18.0
2016Q3	74.6	13.2	87.8	21.2
2016Q4	69.3	13.2	82.6	21.7
2017Q1	76.7	14.1	90.8	22.4
2017Q2	54.9	13.2	68.1	17.6
2017Q3	59.7	13.5	73.1	18.2
2017Q4	70.8	11.5	82.2	4.6
2018Q1	72.1	11.4	83.5	16.6
2018Q2	57.4	11.3	68.8	25.0
2018Q3	77.1	9.6	86.7	16.9
2018Q4	74.7	10.1	84.8	19.3
2019Q1	46.7	9.4	56.1	19.9
2019Q2	51.0	9.8	60.8	17.5
2019Q3	32.7	9.2	41.9	16.5
2019Q4	76.2	9.2	85.4	20.6
2020Q1	73.3	9.5	82.8	22.6
2020Q2	80.8	9.1	89.9	27.3
2020Q3	63.7	8.2	71.9	31.1
2020Q4	80.4	8.4	88.8	21.6
2021Q1	61.8	8.5	70.3	21.6
2021Q2	44.1	8.1	52.2	19.9



Latin America Commission (BPS)

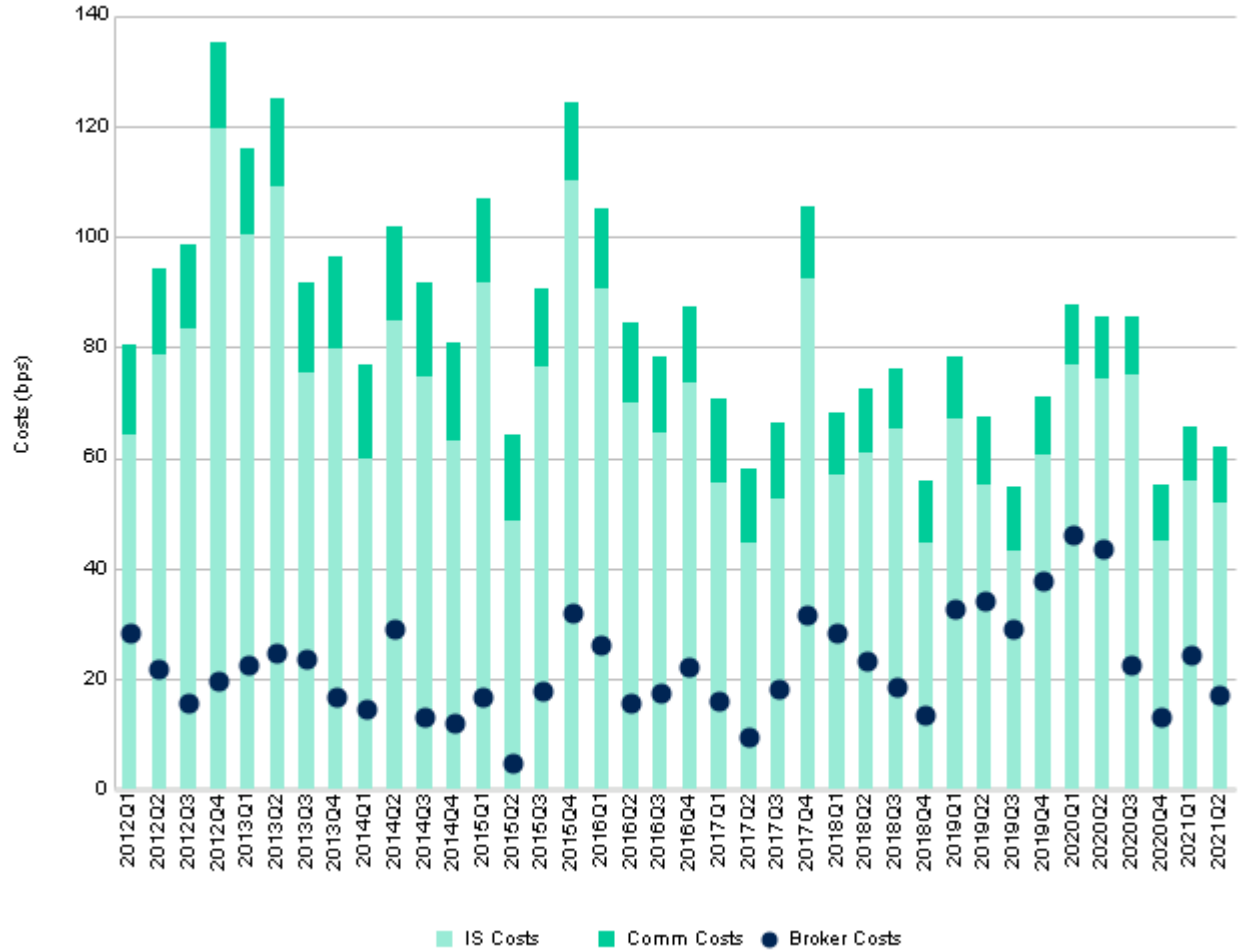
Commission (BPS)	Traded Value (USD Millions)
(0 , 2)	527
(2 , 4)	4,720
(4 , 6)	3,988
(6 , 8)	3,266
(8 , 10)	3,068
(10 , 12)	3,086
(12 , 14)	1,367
(14 , 16)	853
(16 , 18)	439
(18 , 20)	283
(20 , 22)	225
(22 , 24)	24
(24 , 26)	156
(26 , 28)	11
(28 , 30)	12
(30 , 32)	6
(34 , 36)	9
(36 , 38)	<1
(38 , 40)	2
> 40	3
Total	22,043



Market Cap	Avg Commission (BPS)	Traded Value (USD Millions)
Micro Cap	12.6	10
Small Cap	7.6	167
Mid Cap	7.9	5,948
Large Cap	8.1	15,918
Total	8.1	22,043

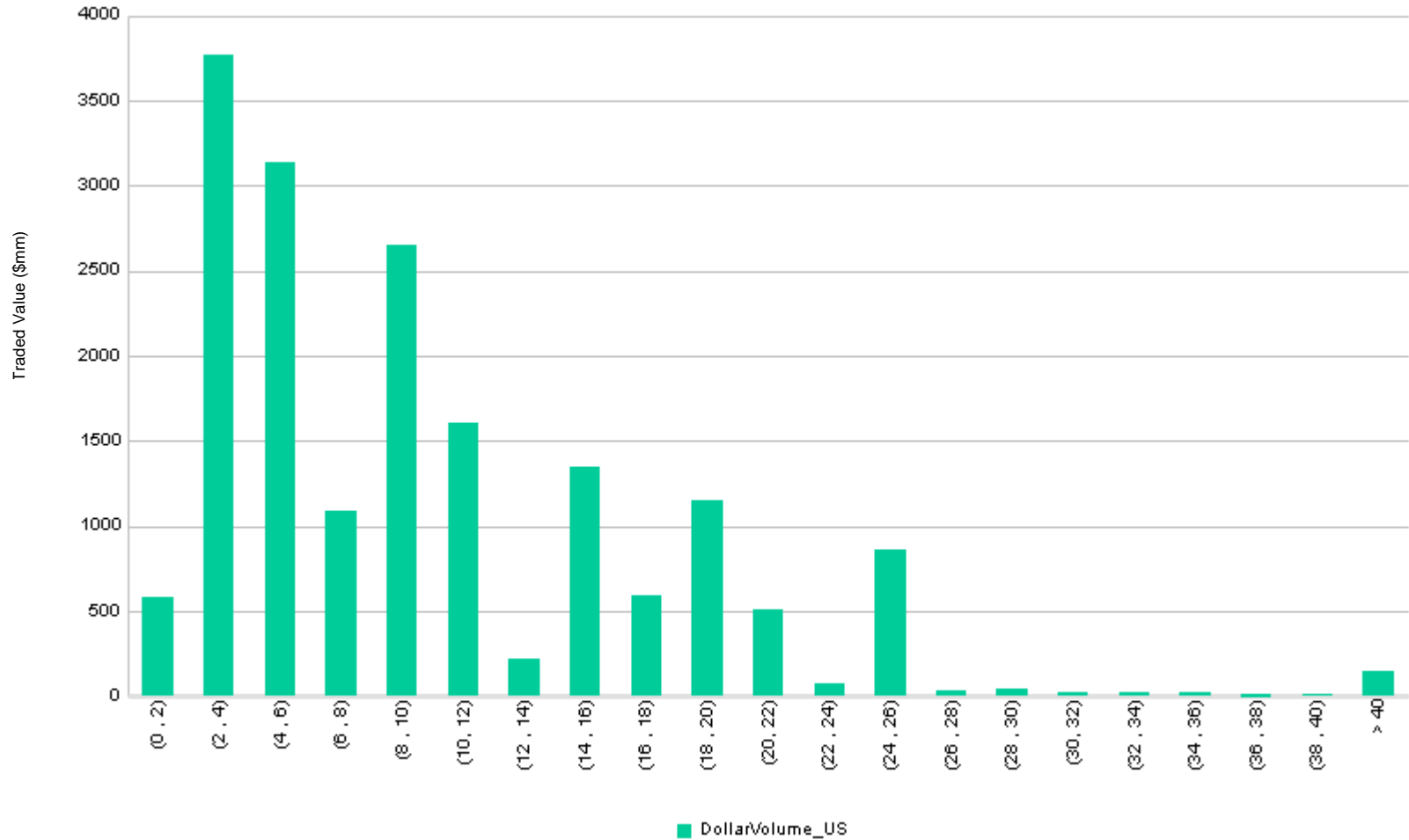
Africa and Middle East (BPS)

Quarter	IS Costs	Comm Costs	Total Costs	Broker Costs
2012Q1	64.2	16.4	80.6	28.3
2012Q2	78.8	15.5	94.3	21.7
2012Q3	83.2	15.3	98.5	15.5
2012Q4	119.4	15.6	135.1	19.8
2013Q1	100.4	15.4	115.8	22.7
2013Q2	109.0	16.0	125.0	24.7
2013Q3	75.4	16.2	91.6	23.5
2013Q4	79.7	16.6	96.3	16.6
2014Q1	59.7	17.3	77.1	14.5
2014Q2	84.8	16.9	101.7	29.0
2014Q3	74.7	17.1	91.8	13.0
2014Q4	63.0	17.9	81.0	12.2
2015Q1	91.8	15.0	106.8	16.7
2015Q2	48.6	15.4	64.0	4.7
2015Q3	76.5	14.2	90.7	17.8
2015Q4	110.1	14.1	124.2	31.8
2016Q1	90.5	14.7	105.3	26.1
2016Q2	70.0	14.4	84.4	15.6
2016Q3	64.4	14.1	78.4	17.4
2016Q4	73.7	13.6	87.3	22.2
2017Q1	55.6	15.1	70.7	15.9
2017Q2	44.6	13.5	58.1	9.7
2017Q3	52.7	13.7	66.4	18.3
2017Q4	92.4	12.9	105.3	31.7
2018Q1	56.9	11.2	68.1	28.2
2018Q2	60.9	11.5	72.4	23.2
2018Q3	65.3	10.9	76.2	18.4
2018Q4	44.6	11.1	55.7	13.5
2019Q1	67.0	11.1	78.1	32.6
2019Q2	55.2	12.4	67.6	34.2
2019Q3	43.1	11.8	54.9	29.2
2019Q4	60.4	10.7	71.1	37.9
2020Q1	76.7	10.9	87.6	46.2
2020Q2	74.3	11.1	85.5	43.5
2020Q3	75.1	10.4	85.4	22.5
2020Q4	44.8	10.3	55.1	13.0
2021Q1	55.7	9.7	65.5	24.5
2021Q2	52.0	10.0	62.0	17.1



Africa and Middle East Commission (BPS)

Commission (BPS)	Traded Value (USD Millions)
(0 , 2)	586
(2 , 4)	3,768
(4 , 6)	3,136
(6 , 8)	1,092
(8 , 10)	2,653
(10 , 12)	1,604
(12 , 14)	222
(14 , 16)	1,351
(16 , 18)	592
(18 , 20)	1,145
(20 , 22)	512
(22 , 24)	69
(24 , 26)	864
(26 , 28)	29
(28 , 30)	39
(30 , 32)	21
(32 , 34)	18
(34 , 36)	18
(36 , 38)	1
(38 , 40)	17
> 40	146
Total	17,884



Market Cap	Avg Commission (BPS)	Traded Value (USD Millions)
Micro Cap	17.7	18
Small Cap	11.0	332
Mid Cap	10.1	4,217
Large Cap	10.0	13,317
Total	10.0	17,884

Appendix

Region	Country	Region	Country	Region	Country
Asia Pacific ex Japan	Australia	Europe ex UK	Austria	Middle East and Africa	Bahrain
Asia Pacific ex Japan	Hong Kong	Europe ex UK	Belgium	Middle East and Africa	Egypt
Asia Pacific ex Japan	New Zealand	Europe ex UK	Cyprus	Middle East and Africa	Israel
Asia Pacific ex Japan	Singapore	Europe ex UK	Denmark	Middle East and Africa	Jordan
Emerging Asia	Bangladesh	Europe ex UK	Finland	Middle East and Africa	Kenya
Emerging Asia	China	Europe ex UK	France	Middle East and Africa	Kuwait
Emerging Asia	India	Europe ex UK	Germany	Middle East and Africa	Morocco
Emerging Asia	Indonesia	Europe ex UK	Greece	Middle East and Africa	Nigeria
Emerging Asia	Kazakhstan	Europe ex UK	Ireland	Middle East and Africa	Oman
Emerging Asia	Malaysia	Europe ex UK	Italy	Middle East and Africa	Qatar
Emerging Asia	Pakistan	Europe ex UK	Luxembourg	Middle East and Africa	Saudi Arabia
Emerging Asia	Philippines	Europe ex UK	Netherlands	Middle East and Africa	South Africa
Emerging Asia	South Korea	Europe ex UK	Norway	Middle East and Africa	Tunisia
Emerging Asia	Sri Lanka	Europe ex UK	Portugal	Middle East and Africa	UAE
Emerging Asia	Taiwan	Europe ex UK	Spain	North America ex US	Canada
Emerging Asia	Thailand	Europe ex UK	Sweden	United Kingdom	United Kingdom
Emerging Asia	Vietnam	Europe ex UK	Switzerland	United States	United States
Emerging Europe	Bulgaria	Japan	Japan		
Emerging Europe	Croatia	Latin America	Argentina		
Emerging Europe	Czech	Latin America	Brazil		
Emerging Europe	Estonia	Latin America	Chile		
Emerging Europe	Hungary	Latin America	Colombia		
Emerging Europe	Lithuania	Latin America	Mexico		
Emerging Europe	Poland	Latin America	Peru		
Emerging Europe	Romania				
Emerging Europe	Russia				
Emerging Europe	Slovenia				
Emerging Europe	Turkey				

Definitions

Traded Value (USD Millions) Principal value of all trades executed, shown in Millions (USD) found in ITG's Peer Universe

Trade Value (CAD Millions) Principal value of all trades executed, shown in Millions (CAD) found in ITG's Peer Universe

Average Commission (BPS) $((\text{Shares Executed} * \text{TradePrice (USD)} * \text{CommissionPerShare(BPS)}) / (\text{SharesExecuted} * \text{tradePrice (USD)}))$

Average Commission (CAD CPS) $((\text{Shares Executed} * \text{CommissionPerShare (CAD CPS)}) / (\text{Shares Executed}))$

Average Commission (USD CPS) $((\text{Shares Executed} * \text{CommissionPerShare (USD CPS)}) / (\text{Shares Executed}))$

IS Cost (BPS) The difference, or slippage between the arrival price and the execution price for a trade.

Total Cost (BPS) The sum of Average Commission (BPS) and IS Cost (BPS)

Broker Cost (BPS) The difference, or slippage, between the broker arrival price and the execution price for a trade.

* Daily exchange rate is used in all calculations

To learn more, contact your sales representative or call our desk at:

APAC +852.2846.3592 | **CAN** +1.416.874.0800 | **EMEA** +44.20.7670.4066 | **US** +1.212.444.6250
info@virtu.com | www.virtu.com

© 2021 Virtu Financial, Inc. All rights reserved. Not to be reproduced or retransmitted without permission. ITG is a registered trademark and Prism is a trademark of the Virtu Financial companies.

These materials are for informational purposes and are not intended to be used to make trading or investment decisions, they are not intended as an offer to sell or the solicitation of an offer to buy any security or financial product, and are not intended as advice (investment, tax or legal). The information contained herein has been taken from trade and statistical services and other sources we believe to be reliable but we do not represent that such information is accurate or complete and it should not be relied upon as such. No guarantee or warranty is made as to the reasonableness of the assumptions or the accuracy of the models or market data.

Securities products and services are offered by the following subsidiaries of Virtu Financial, Inc. In the U.S., Virtu ITG LLC or Virtu Americas LLC, both FINRA and SIPC members; in Canada, Virtu ITG Canada Corp., member Canadian Investor Protection Fund (“CIPF”) and Investment Industry Regulatory Organization of Canada (“IIROC”), MATCHNow is a product offering of TriAct Canada Marketplace LP (“TriAct”), member CIPF and IIROC. TriAct is a wholly owned subsidiary of Virtu ITG Canada Corp.; in Europe, Virtu ITG Europe Limited, registered in Ireland No. 283940 (“VIEL”) (VIEL’s registered office is Block A, 1 Georges Quay, Dublin 2, Ireland. VIEL is authorized and regulated by the Central Bank of Ireland), and also by Virtu Financial Ireland Limited, registered in Ireland No. 471719 (“VFIL”) (VFIL’s registered office is Whitaker Court, Whitaker Square, Third Floor, Block C, Sir John Rogerson’s Quay, Dublin 2, Ireland. VFIL is authorised and regulated by the Central Bank of Ireland); in Asia, Virtu ITG Hong Kong Limited (SFC License No. AHD810), Virtu ITG Singapore Pte Limited (CMS License No. 100138-1), and Virtu ITG Australia Limited (AFS License No. 219582).